



#BREAK  Free  
YOUTH CLINIC  
PROPOSAL



# CONTENT

<b>EXECUTIVE SUMMARY</b>	<b>4</b>
<b>1. VALUE PROPOSITION</b>	<b>5</b>
<b>2. NEEDS ANALYSIS</b>	<b>6</b>
2.1 GENDER-BASED VIOLENCE AND FEMICIDE (GBV-F)	
2.2 HIV & AIDS	
2.3 SRH SERVICES	
2.4 MENTAL HEALTH SERVICES	
<b>3. OVERARCHING GOALS</b>	<b>7</b>
3.1. PREVENTION	
3.2. MENTAL HEALTH AND TRAUMA MANAGEMENT	
3.3. CLINICAL SERVICES	
<b>4. COMPONENTS AND SERVICES PROVIDED</b>	<b>8</b>
4.1. #BREAKFREE YOUTH CLINIC SERVICES	
4.2. #BREAKFREE YOUTH CLINIC STAFF COMPOSITION	
<b>5. COMPLIANCE</b>	<b>10</b>
<b>6. MARKET ANALYSIS</b>	<b>10</b>
<b>7. VOLUNTEERISM</b>	<b>10</b>
<b>8. STAKEHOLDER MANAGEMENT</b>	<b>10</b>
<b>9. CRITICAL SUCCESS FACTORS</b>	<b>10</b>
<b>10. GOVERNANCE</b>	<b>11</b>
<b>11. CONCLUSION</b>	<b>11</b>
<b>12 BUDGET</b>	<b>12</b>
<b>13.ANNEXURE A: TECHNICAL DRAWINGS &amp; COMMUNITY ENGAGEMENT</b>	<b>25</b>

# EXECUTIVE SUMMARY

Project #BeFree was conceived as a result of engaging over 150,000 young people from all fourteen regions in Namibia, the Southern African Development Community (SADC), the United States of America, Switzerland, and the Netherlands, with frank, non-judgmental dialogues and thematic conversations on the challenges faced by adolescent girls and young people (AGYP). The findings and recommendations from these engagements are captured in the #BeFree Key Learnings Report, which reveals that there is a pressing need for an integrated health and protection system with adequate capacity and resources to prevent harm and respond to the needs of AGYP in a coordinated manner.

The #BreakFree Youth Clinic (#BYC) was inspired by the need to address some of the critical service delivery gaps and needs identified by AGYP through the provision of comprehensive sexual and reproductive health services and psychological support. For instance, it was noted that there is a gap in the number of boys accessing reproductive health services as compared to girls. The same goes for AGYP clients with disabilities, due to their inability to access these services in most cases.

Extensive work has been done so far as documented in the #BeFree Key Learnings Report, #BreakFree Anti-Violence Campaign Report and Problematic Mindsets Research Report. In addition, various reports were compiled following focus group discussions with young people living with HIV (YPLHIV), survivors of gender-based violence and femicide (GBV-F), parents, and front line service providers. The need to specifically address the increase of HIV/AIDS amongst AGYP, limited access to SRH services, the high rates of unintended pregnancies and GBV-F, substance abuse, and mental health challenges in a comprehensive, youth-friendly manner were among the key findings of these reports.

The #BYC will serve youth between the ages of 13 and 30 and is strategically located on the #BeFree Campus in the peri-urban area of Katutura in the capital city of Namibia, Windhoek. The #BYC is ideally located, as it is in close proximity to the Katutura State Hospital, Katutura Magistrates Court, Katutura Police Station, Gender-based Violence Investigating Unit, twelve (12) youth organisations and six (6) schools. This will largely help address the fragmented nature of healthcare services in the area by creating a one-stop shop with integrated, adolescent-friendly healthcare

services.

The #BYC will also boast an experienced, case-sensitive, diverse multi-disciplinary team that will create a safe and enabling environment for quality SRH, psychosocial support and mental health services to AGYP. The #BYC will be grounded on the overarching goals of prevention, mental health, trauma management, and the provision of SRH services. The center has the capacity to host over five hundred young people weekly, who will access not only the clinic but also the various auxiliary spaces and activities offered on the #BeFree Campus with reproductive health services being offered in the form of incentivised health care.

Ongoing training for staff and volunteers will be offered to ensure that our work remains relevant. Staff mentoring programs will improve the provision of high-quality services while focusing on improving staff attitudes to ensure an environment free of judgment and discrimination for adolescents and young people.

ONE has executed extensive and varied stakeholder engagements in both the public and private sectors and has managed to maintain sound relationships with key ministries and numerous critical partnerships to aid the development of the #BeFree Campus, including the #BYC. This exercise has been of utmost importance as there is a strong need to break down silos for the efficient coordination of service delivery. The project's continued engagement with the local community remains at its core to instill ownership and help promote and inform the public about the various services that will be provided at the #BYC.

In essence, the development of the #BYC and the greater #BeFree campus is the biggest public-private investment in youth development and healthcare in Namibia, and it aspires to provide AGYP with integrated clinical and psychosocial support services under one roof. This innovative intervention is one of its kind and can be scaled up to other regions, both locally and internationally. It is believed that through this initiative, we will build young people who are resilient, decision-makers, innovative, and caretakers of our world tomorrow.

# #1

## VALUE PROPOSITION

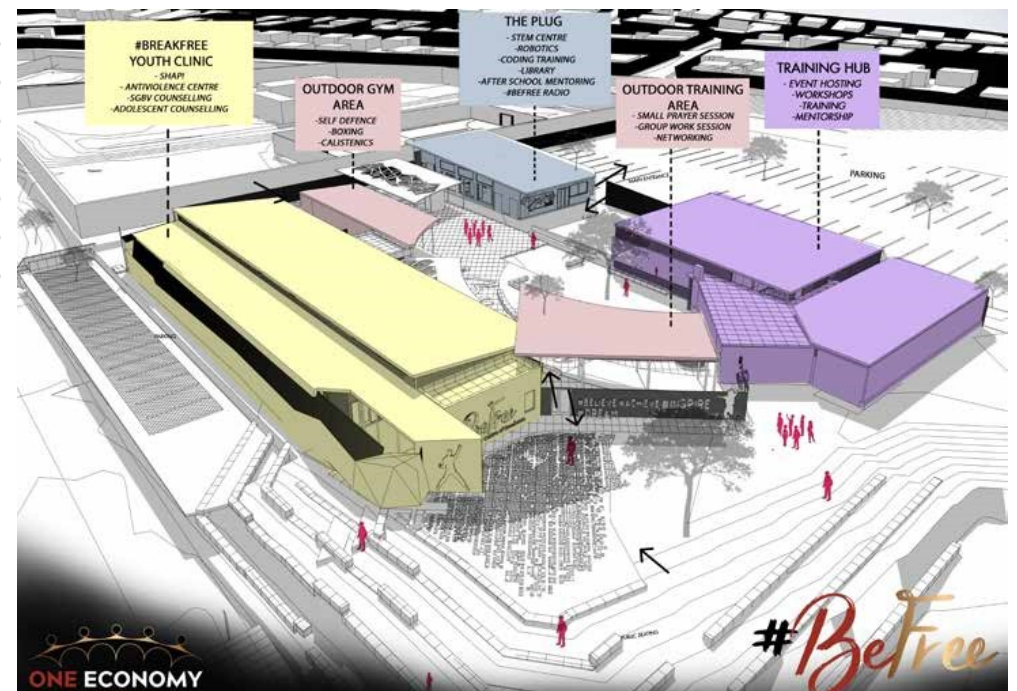
The long-term vision of #BYC is the continued promotion of health, wellness, and community upliftment through the various services and programs for young people. Diversity and inclusion are core to our organizations' values and as a result, all project activities will be gender sensitive throughout the process to minimize the gender-related imbalance.

The health centre will act as a central reference point for the surrounding youth organizations and communities living in nearby residential areas. There are many business and recreational activities in close proximity of the centre such as shopping malls, street markets, informal trading stalls, taxi ranks, a multipurpose youth training centre and several sports fields. As a result, there is a constant movement of pedestrians around the site of almost a thousand people daily which makes this a formidable site for marketing and the potential for dissemination of information. Most of the workplaces in the surrounding area do not have wellness programs where employees can get information on reproductive health and the adolescent health centre can play a critical role in

SRHR awareness by distributing IEC material as they pass at the centre.

Stakeholders and potential partners will have access to the site and the opportunity to run various programmes, workshops, trainings, engagements and community activations for sustainability. A great opportunity exists for partners to leverage the #BeFree or #BreakFree brand locally and internationally.

Through our agreement with the Ministry of Sport, Youth and National Service, Project #BeFree has the potential to expedite various programmes and services countrywide. through the ministries' various regional offices. We greatly value partnerships and strategic cooperation as they enable impactful ideas to be executed in an efficient, effective, and sustainable manner. This model clinic creates a unique platform that allows partners and stakeholders to directly engage with the youth and community and can be replicated at regional, continental and global levels.



# #2 NEEDS ANALYSIS

Key Learnings Report, #BreakFree Anti-Violence Campaign Report, Problematic Mindsets Research Report and focus group discussions with youth, parents and frontline service providers detail the urgent need to address the increase of HIV/AIDS amongst AGYP, limited access to SRH services, the high rates of GBV-F and mental health challenges in a comprehensive integrated manner.

Most of these needs are frequently intertwined, making the establishment of an integrated healthcare centre like the #BreakFree Youth Clinic important. Please find below a breakdown of the areas:

## 2.1 Gender-Based Violence and Femicide (GBV-F)

Various Namibian reports and case studies revealed that women and children are disproportionately victims and survivors of gender-based violence and infanticide. Among 18-24-year-olds nearly two out of five females (39.6%) and 45.0% of males experienced any violence in childhood. Studies also revealed the immense negative effect that GBV has on school retention. Among 18-24-year-olds who experienced childhood physical violence, approximately one in ten (9.7% of females and 10.8% of males) missed school due to an incident of physical violence (VAC Study Report, 2020). The fragmentation of services and archaic processes have led to ineffective service delivery, low conviction rates and high rates of case withdrawals (VAC Study Report, 2020). The #BreakFree clinic and Antiviolence Centre will provide integrated medical, legal, and psychosocial support services to AGYP.

## 2.2 HIV & AIDS

Namibia has one of the highest HIV prevalence in the world, with 11.6 % and HIV has been one of the leading causes of death prior to the COVID-19 outbreak (NSF 2017-2022 review report). New HIV infections remains high in adolescent

girls and young women and is mostly fueled by transactional sex. Therefore, the revision of SRH clinical services remains important as AGYP in Namibia experiences a lack of access to quality healthcare services and information.

Generally, Adolescent girls and young women (AGYW) have a double chance of getting infected with HIV and the reduction of new HIV infections is slower in AGYW as compared to adolescent boys and young men (ABYM). This however does not understate the need to focus on reaching more boys and young men with our services, because data have shown that they are underserved. #BreakFree youth clinic will provide SRH services to AGYP, with a specific focus of reducing new HIV infection rates.

## 2.3 SRH Services

High rates of unintended pregnancies, sexual violence, unsafe abortions, infanticide, limited access to comprehensive youth-friendly services and the interruption in the supply chain of critical commodities were mentioned as key challenges by both youth and frontline service providers during focus group discussions.

The Ministry of Health is busy introducing the Human Papilloma Virus (HPV) vaccine in the public sector and our clinic is well-positioned to advocate and ensure that the public is well informed on HPV. Furthermore, the clinic will offer screening and HPV vaccination to AGYP to safeguard against cervical cancers.

Seventy-eight percent (78.7%) of adolescents and young boys aged 10-24 years received voluntary medical male circumcision (VMMC) according to Quarter 4 Report of MHSS (2021/22 FY). The demand for VMMC is anticipated to increase with greater awareness creation and also because we will provide incentivized health care. The centre will focus on male specific programming and support and information for adolescent boys and young men.

The rate of unintended pregnancies countrywide is at 19% in 2021 (MHSS) suggesting that one in five girls aged 15-19 has begun childbearing. However, this rate is noted to be as high as 36% in informal settlements and rural areas. The #BYC is in a peri-urban informal area of Windhoek and is likely to have high unintended pregnancy rates among adolescents. Hence, the provision of comprehensive integrated SRH services will increase the uptake of reproductive and maternal health services especially for adolescent youth and young women according to the recently launched Antenatal Care (ANC) Guidelines. Services for rape survivors will focus on ensuring that the full post-rape care package is offered (see section 4.1, Clinical Services, Post-Rape Care for the full range of services).

The current disjointed nature of the health care and criminal justice system and minor technicalities can often provide grounds for case dismissal and lead to secondary trauma for the survivor. There are specific procedures that must be followed in terms of documenting a rape or assault case. The #BYC seeks to streamline these processes by providing a safe environment and a one-stop solution for post-rape and trauma care, breaking silos of information and service delivery.

Life Skills Based Health Education (formerly known as comprehensive sexuality education) is a fundamental part of #BYC and is offered in schools to equip AGYP with knowledge, skills, attitudes, and values that will empower them to realize their health, well-being, and dignity. Life Skills helps them to develop respectful relationships, and how to consider how their choices affect their own well-being and that of others. All this to ensure that they make safe and healthy decisions about their bodies, their lives, and their futures. (ESA Ministerial Commitments, 2013) In Namibia, Life Skills training in schools is not an examinable subject and thus not treated

as a priority. Instead, Life Skills classes are used to do homework and other promotional subjects. Life Skills teachers are not comfortable teaching CSE and SRHR due to interference from parents and religious leaders. Comprehensive Life Skills training will be offered at the #BeFree Campus through workshops and dialogues on SRHR, GBV-F, unintended pregnancy, substance abuse, intergenerational sexual relationships and online exploitation and abuse.

## 2.4 Mental Health Services

Insights from our caseloads and #BeFree Key Learnings Report, reveal a myriad of mental health challenges faced by AGYP, especially young people living positively with HIV, survivors of GBV-F and adolescent mothers. Studies have revealed the strong link between substance abuse and mental health. It is important to not only address the physical needs of young people, but also their mental well-being, especially at this critical stage where they are going through hormonal changes. Counseling and therapy for untreated childhood trauma, substance abuse, post-traumatic stress disorder, anxiety, bipolar, depression, suicide ideation will be provided.

Saddam, we need to insert a diagram to show how AGYP will access services at the centre like FLON was giving an example to ED. May you kindly assist in this regard? The example FLON gave was of a Rape Victim/Survivor who will need – post-rape care (HIV test, PEP, STI treatment, etc.), police statements, GBV counselling, other support services, witness support, etc.

# #3 OVERARCHING GOALS FOR THE #BREAKFREE YOUTH CLINIC

## 3.1. Prevention

Provide primary and limited secondary prevention interventions to AGYP between the ages of 13 to 30 years. Primary prevention programs will seek to directly address and raise awareness on issues related to GBV-F, HIV, SRH and mental health. The aim is to empower the youth with appropriate information to enable them to make informed decisions and provide them with essential life skills tools and clinical services. Key findings have highlighted the significance of preventing early sexual debuts and the transmission of sexually transmitted diseases and that will be our focus area in our programming. It is imperative to understand that we want to educate AGYP to delay sexual debuts as much as possible, with the perspective that some AGYP are already sexually active, and we will not judge them for that.

## 3.2. Mental Health and Trauma Management

Through continued psychosocial support the clinic will raise awareness, provide safe spaces, and equip AGYP with information and tools to navigate the community's numerous social ills. The effectiveness of the service will not only contribute to post-trauma support, but its success will act as the biggest primary prevention mechanism through outreach programmes, peer counselling and trauma debriefing that will provide critical coping skills and long-term psychological support for both survivors (including accompanying them to court) and frontline service providers. Family intervention and mediation services will be offered as well to provide support to resolve of disputes and ensure attachment between the children and their families.

## 3.3. Clinical Services

The BreakFree Youth Clinic will offer a full range of clinical sexual reproductive health services to AGYP, from wellness screening, aftercare to long-term counselling, and psychosocial support. The creation of a safe, non-judgmental space in which young people can feel comfortable is critical to the success of healthcare provision for those who need it. There has been a strong call for a space that integrates law enforcement-, medical-, legal- and psychosocial support services.

# #4 COMPONENTS AND SERVICES PROVIDED AT THE #BREAKFREE YOUTH CLINIC

## #COMPONENTS

## #SERVICES

### 1. PREVENTION



- Facilitate awareness and community engagement around the availability of SRHR services, early sexual debuts, unintended pregnancies, family planning, etc.;
- Male-specific programs on sexual health, physical and emotional development;
- Life skills and information sharing for adolescents at surrounding schools and to out-of-school youth visiting the centre;
- Parental classes for teenage parents;
- Nutritional support for mothers and children in need;
- Instil de-escalation techniques;
- Provide constructive conflict resolution and mediation;
- Frank and open conversations about sex to destigmatise and demystify responsible access to services and information to enable informed decision-making; and
- Distribution of SRHR, mental health, VAC and GBV-FIEC materials.

### 2. MENTAL HEALTH AND TRAUMA MANAGEMENT



- Peer counselling, spiritual guidance, religious development (access to social workers, psychologists, youth officers, youth pastors, etc.);
- Individual and group therapy;
- Family intervention and mediation;
- Case management and psychosocial support
- Counselling centred on anti-gender-based violence work (case management, court work, referral, training, and advocacy);
- Court diversion programmes;
- Trauma debriefing;
- Provide training on bystander interventions; and
- Trauma counselling, stress management and self-care.

## #COMPONENTS

## #SERVICES

### 2. CLINICAL SERVICES



- Detailed sexual health assessment;
- Sexually transmitted infections (STI) screening and treatment;
- HIV testing services;
- ART (treatment, care and support);
- HPV screening and vaccination;
- Drug tests;
- Wellness screening and information sharing (cervical, ovarian and endometrium screening);
- Pregnancy Screening (pregnancy test, counselling for mental health services, psychosocial support for patient that find out she is pregnant (including teenage fathers).

#### Contraceptives

- Adolescent appropriate contraceptives.

#### Antenatal care

- Antenatal care for adolescent mothers.

#### Male Specific Treatment

- VMMC (Voluntary Medical Male Circumcision).

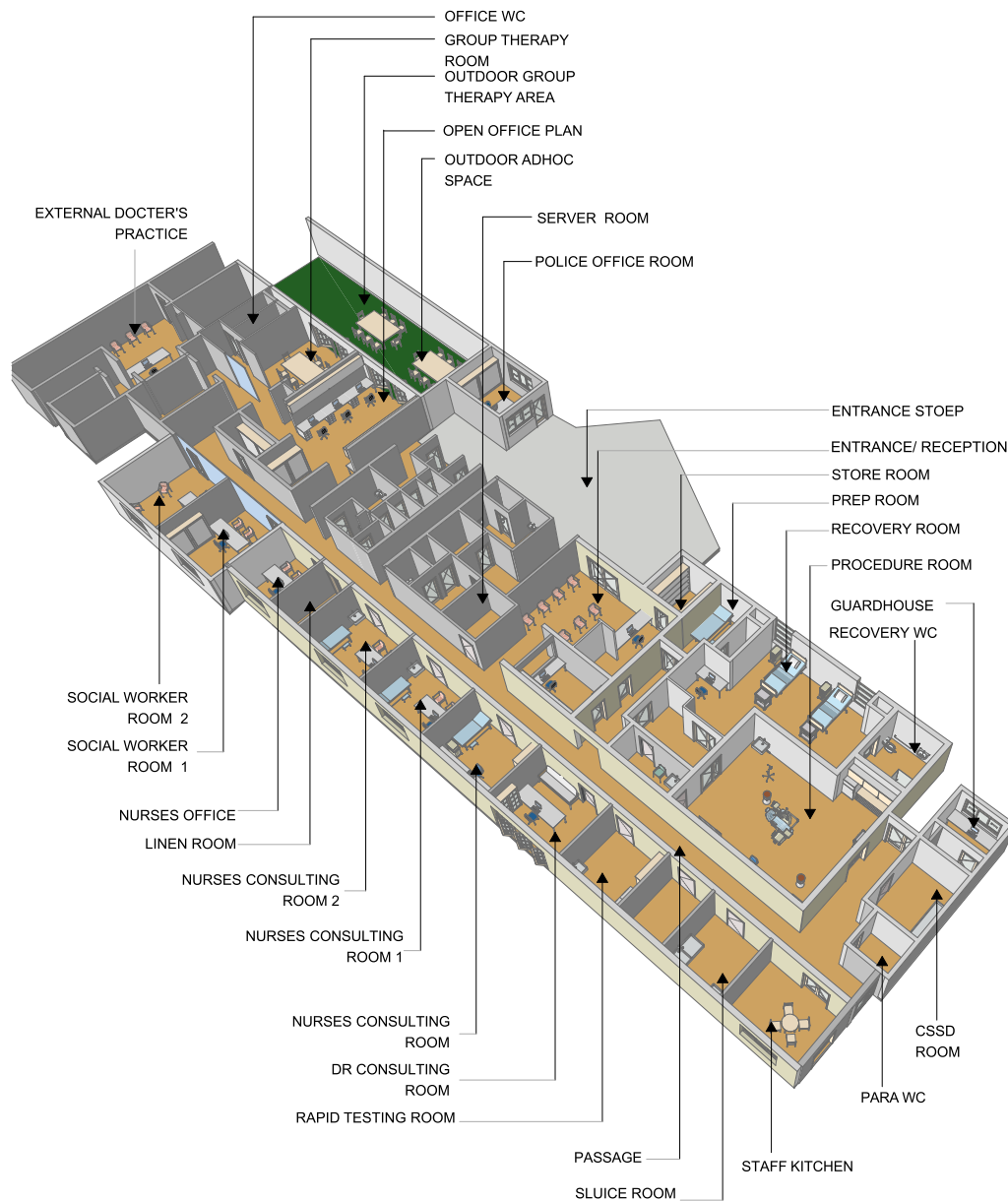
#### Post Rape Care

- Trauma debriefing and counselling;
- Administration of rape kits;
- Access to post-exposure prophylaxis;
- Emergency contraception;
- Repair of vaginal tears;
- Provision of emergency care packs;
- Provision of dignity/hygiene packs;
- Access to continued counselling and support;
- Statement taking and opening of criminal charges;
- Survivor support groups; and
- Referrals (shelter, psychologist, a magistrate for a protection order, play therapist, etc.).

#### SRH Procedures

- ERPOC (Evacuation of Retained Products of Conception);
- Abortion for rape victims as prescribed by law; and
- Post-abortion care and counselling.





**3D LAYOUT OF #BREAKFREE YOUTH CLINIC**

**INTEGRATED SERVICES OF #BREAKFREE YOUTH CLINIC**

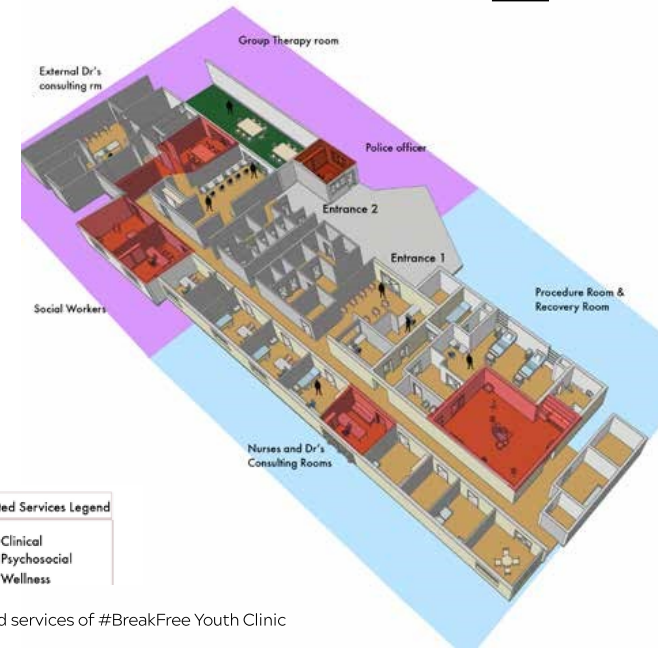


Fig 2. Integrated services of #BreakFree Youth Clinic

# #4.2

## #BREAKFREE YOUTH CLINIC STAFF

The #BreakFree Youth Clinic's staff will be diverse, experienced, and sensitive to engaging young people and providing a non-judgmental environment. Key to the success of the #BreakFree Youth Clinic effectiveness, sensitivity, and experience of its staff. Our key learning from benchmarking and engaging with the youth has provided us with invaluable insight into best practices, sensitivities, and concerns faced by the young people. Staff will be dressed in unique uniforms reflecting the vibrance and youthfulness of the #BeFree Campus. The #BreakFree Youth Clinic will have a competent staff complement of professionals who will undergo regular training and mentoring for the provision of quality services.

# #5

## COMPLIANCE

A comprehensive assessment of the various healthcare and regulatory frameworks to be complied with was done, and we are satisfied that we can provide a safe space for the youth to receive SRH and psychosocial care and support. We are adhering to compliance with local health regulations as well as the integration of the best local and international SRHR practices.

# #6

## MARKET ANALYSIS

The #BreakFree Youth Clinic is located within 1 km from Katutura State Hospital and seeks to complement services offered to AGYP. This will largely help address the fragmented nature of healthcare services in the area by creating a one-stop shop with integrated adolescent-friendly healthcare services. #BYC will be the only youth-focused healthcare facility within the Khomas region with the site uniquely positioned to provide support to twelve (12) youth-focused organisations and six (6) schools in proximity.

A memorandum of agreement was signed with the Ministry of Sport, Youth and National Service (MSYNS) that engage their Katutura Multi-Purpose Youth Centre (MPYC) in a Public-Private Partnership (PPP). This agreement enables ONE to further extend prevention programs and activities to a larger audience and eventually to various regions through the MPYC of the MSYNS.

# #7

## VOLUNTEERISM

Volunteers have been at the forefront of the #BreakFree movement and the creation of safe non-judgmental spaces through the #BeFree and #BreakFree ambassadors programme, survivor support groups, trauma debriefing training and story exchange programs and will remain an important component of the #BreakFree Youth Clinic.

# #8

## STAKEHOLDER MANAGEMENT

Since the inception of the #BeFree movement, ONE has executed extensive and varied stakeholder engagements. This exercise has been of utmost importance as there is a strong need to create smart partnerships for the efficient coordination of service delivery. ONE has engaged strategic stakeholders in both public and private sectors and has managed to form numerous critical partnerships to aid the development of the #BYC as well as continued support for programming.

The continued engagement with the local community remains at the core of the project to inculcate ownership and help promote and inform the public of the different services that will be provided at the #BYC. Therefore, we have strategically created several levels of tiers that will seek to engage the community throughout the construction of the project and after building completion. The active participation of local school scholars during construction will integrate them into development and ensure their intricate understanding of all aspects of the project from inception to the rollout of programs.

# #9

## CRITICAL SUCCESS FACTORS

- » Ensure best practices and provision of SRHR and psychosocial health care to the youth;
- » Ensure that services remain non-judgmental and respectful to the agency young people;
- » Remain innovative;
- » Ensure a constant stream of feeds from young people;
- » Ensure a sustainability model that integrates smart partnerships with government, civil society organisations, young people, and the private sector.
- »

# #10

## GOVERNANCE

One Economy Foundation (ONE) is registered as a Section 21 Company in terms for the Namibian Companies Act. Due to our community work, we are also registered as a Social Welfare Organization (WO468). ONE's US Equivalency Determination is in place and the 501c incorporation to the US is in an advanced stage. ONE is governed by an independent, board of non-executive directors who bear overall responsibility for providing strategic direction and exercising fiduciary duties.

The One Economy Foundation has a strong governance framework, drafted by the country's top governance experts, and has been requested

and used as a reference document for a number of regional non-profit entities.

We are committed to accountability, efficiency, and transparency, which is proven by our unqualified audit opinion and strong governance framework. As part of our reporting mechanisms, we have quarterly reports and newsletters to stakeholders and annual reports that demonstrate the transformative and impactful work of the foundation.



# #11

## CONCLUSION

The design of the #BreakFree Youth Clinic conjures excitement because of the potential impact it has, as it offers comprehensive integrated youth-friendly services by a multi-disciplinary team, all under one roof. It will address the identified overarching needs, such as the increase in HIV/AIDS among AGYP, high rates of gender-based violence and femicide, alarming rates in teenage pregnancies, substance abuse, and a lack of access to comprehensive SRH and mental health services. Through this unique provision of quality, integrated healthcare services in combination with a myriad of other complimentary services for AGYP, we are convinced that we will maintain efficient and effective support to our target audience.

ONE is confident in its governance framework and its ability to execute, coordinate, and manage donor and stakeholder interests. The project will complement existing services and positively contribute to the quality of lives of AGYP, their families and surrounding communities. This pilot project, if successful, can be replicated in all other regions including the SADC and the rest of the world as a best practice.

The development of the #BreakFree Youth Clinic and the larger #BeFree Campus is believed to be the most significant private-public partnership in Namibia for youth development. We cordially invite you to join us on this journey as we continue to facilitate effective and long-term interventions for adolescents and youth.





**BUDGET**

last updated  
09/02/23

Budget Line No.	Activity Description	Cost Input	Y1 Unit Cost (NAD Currency)	Y1 Unit Cost ( USD Currency)
1	Phase 1 Building Construction	Assets	31,384,232.62	1,705,664.82
2	Phase 1 Furniture and Office Equipment	Assets	2,977,846.95	161,839.51
	Phase 1 Full Capital Requirement		<b>NAD 34,362,079.57</b>	<b>\$ 1,867,504.32</b>
	Capital Obtained		NAD 26,390,000.00	\$ 1,434,239.13
	Fairly Certain Commitments		NAD 2,132,800.00	\$ 115,913.04
	Still to be raised		NAD 5,839,279.57	\$ 317,352.15
<b>*USD 1 - N\$18.4</b>				
*Phase 1 To be completed July 2023				

## DETAILED BREAKDOWN

BL 1	Unit of measure	Quantity	Frequency	Unit Price	Total in USD	Total In NAD	Budgeted Amount	Actual
BreakFree Youth Clinic Construction (Phase 1)					1,355,932.84	24,949,164.20		
BreakFree Youth Clinic Equipment (Phase 1)					99,336.41	1,827,789.95		
The Plug Construction (Phase 1)					349,731.98	6,435,068.42		
The Plug Equipment (Phase 1)					62,503.10	1,150,057.00		
					-			
Training Hall Construction (Phase 2)					631,968.30	11,628,216.65		
Training Hall Equipment (Phase 2)					48,573.37	893,750.00		
Full Construction cost total					2,636,536.03	48,512,262.87		

BreakFree Youth Clinic								
<b>Building Construction, Furniture and Office Equipment</b>								
<i>Activity - Information to young people about HIV, family planning</i>								
<i>Activity - Facilitate awareness and community engagement around early sexual debuts, teenage pregnancy</i>								
<i>Activity - Life skills and information sharing for early adolescents 10-12 years old</i>								
<i>Activity - Frank and open conversations about sex to destigmatise, and demystify responsible access to services and information to enable informed decision-making</i>								
<i>Activity - Peer counselling, spiritual guidance, religious</i>								
Activity Area- Chairs	once off	20.00	1.00	70.11	1,402.17	25,800.00		
Activity Area- Foldable Table	once off	2.00	1.00	32.61	65.22	1,200.00		
Activity Area - Table cloth	once off	2.00	1.00	16.30	32.61	600.00		
Activity Area - Mobile Projector	once off	1.00	1.00	353.26	353.26	6,500.00		
Activity Area -Mobile Projector Screen	once off	1.00	1.00	135.87	135.87	2,500.00		
Activity Area -Pin Boards /Notice Board	once off	3.00	1.00	81.52	244.57	4,500.00		
Activity Area - Outdoor speakers	once off	4.00	1.00	1,358.70	5,434.78	100,000.00		
Activity Area - Mobile TV / Outdoor screen	once off	1.00	1.00	1,902.17	1,902.17	35,000.00		
<i>Activity- Male specific programme on sexual health, physical and emotional development</i>						-		
<i>Activity- Full spectrum of reproductive health services</i> - Screening and information sharing for Reproductive Cancers (cervical, endometrium wellness screening) • ERPOC (Evacuation of Retained Products of Conception); • VMMC (Voluntary Medical Male Circumcision); • Vaginoplasty ( Vaginal tear repair); • Abortion for rape victims as prescribed by law • Contraceptive implants						-		
<b>PROCEDURE ROOM</b>								
ET001- EMERGENCY TROLLEY CART	once off	1.00	1.00	217.39	217.39	4,000.00		
SD001-SANITIZER DISPENSER	once off	1.00	1.00	76.09	76.09	1,400.00		
TD001-TOWEL DISEPENSER	once off	1.00	1.00	76.09	76.09	1,400.00		
MS001- MOBILE SONAR -Ultrasound Machine - M6 PORTABLE COLOR DOPPLER ULTRASOUND SYSTEM	once off	1.00	1.00	13,990.63	13,990.63			257,427.50
MS001-Trolley for M6 ULTRASOUND MONITOR	once off	1.00	1.00	2,119.79	2,119.79			39,004.16
BS001- BED STEPS	once off	1.00	1.00	59.78	59.78	1,100.00		
TAB001-ELECTRIC OPERATING TABLE ( MINDRAY UNIBASE 30)	once off	1.00	1.00	24,562.35	24,562.35			451,947.24

LIG001-THEATRE LIGHTS, DUAL ARTICULATED ARMCEILING MOUNTED (MINDRAY Hyled 760/760 LED SURGICAL LIGHT )	once off	1.00	1.00	15,987.65	15,987.65			294,172.82
CLO001-CLOCK, SYCHRONUS, WALL MOUNTED	once off	1.00	1.00	27.17	27.17	500.00		
CHRO01-CHAIR	once off	1.00	1.00	70.11	70.11	1,290.00		
DSR001- DIAGNOSTIC SET RECHARGEABLE	once off	1.00	1.00	733.98	733.98	13,505.27		
STO001-STOOL SURGEON	once off	1.00	1.00	298.91	298.91	5,500.00		
TRO001- TROLLEY GOWNING	once off	1.00	1.00	40.76	40.76	750.00		
IT001-INSTRUMENT TROLLEY, 410X610mm ANTISTATIC	once off	1.00	1.00	326.09	326.09	6,000.00		
DLT001-TROLLEY, SOILED /DIRTY LINEN WITH RECEPTABLE	once off	1.00	1.00	261.32	261.32	4,808.36		
KIC001- MOBILE KICKABOUT TO SUIT BOWL_ STAINLESS STEEL	once off	1.00	1.00	109.24	109.24	2,010.02		
MBP001-MOBILE P MONITOR- NIBP /SP02/TEM/ECG (uMEC10 10 PATIENT MONITOR)	once off	1.00	1.00	1,404.21	1,404.21			25,837.40
PMT001-PATIENT MONITOR TROLLEY - BASIC ROLLING STAND IPM/IMEC/UMEC	once off	1.00	1.00	203.19	203.19			3,738.77
ANA001-ANAESTHESIA WORK STATION -MINDRAY WATO EX-65 ANESTHESIA MACHINE	once off	1.00	1.00	41,076.46	41,076.46			755,806.80
PMT002- BENEVISION N15 PATIENT MONITOR	once off	1.00	1.00	5,413.03	5,413.03			99,599.78
SUC001-SURGICAL SUCTION ASKIR- MOBILE PORTABLE 4 BOTTLE, HIGH VAC CASCADING	once off	1.00	1.00	374.32	374.32	6,887.46		
MWB001- MEDICAL WASTE BIN	once off	1.00	1.00	27.17	27.17	500.00		
BBB001-BLOOD BANK /FLUID WARMER	once off	1.00	1.00	3,913.04	3,913.04	72,000.00		
CHR002- CHAIR , MEDIUM BACK	once off	1.00	1.00	108.70	108.70	2,000.00		
FLM001-FULL LENGTH MIRROR (SCRUB/CHANGING ROOM)	once off	1.00	1.00	40.76	40.76	750.00		
STD002-SANITISER DISPENSER (SCRUB/CHANGING ROOM)	once off	1.00	1.00	59.78	59.78	1,100.00		
PTD002-PAPER TOWEL DISPENSER (SCRUB/CHANGING ROOM)	once off	1.00	1.00	76.09	76.09	1,400.00		
SURGICAL INSTRUMENTS								
CULPESCOPY EQUIPMENT								
<b>PREP ROOM</b>								
PATIENT MONITOR VS900	once off	1.00	1.00	1,992.32	1,992.32	36,658.72		
BASIC STAND ROLLING VS900	once off	1.00	1.00	218.82	218.82	4,026.32		
FB001- FOWLER BED	once off	1.00	1.00	1,739.13	1,739.13	32,000.00		
WB001- WASTE BIN	once off	1.00	1.00	76.09	76.09	1,400.00		
BS001- BED STEP	once off	1.00	1.00	34.78	34.78	640.00		
<b>RECOVERY ROOM</b>								
WB001- WASTE BIN	once off	1.00	1.00	10.87	10.87	200.00		
BS001- FOOTSTOOL SINGLE	once off	2.00	1.00	55.92	111.85	2,058.00		
BS001- FOOTSTOOL DOUBLE STEP RUBBER TOP	once off	2.00	1.00	75.35	150.71	2,773.00		
ETO01-EMERGENCY CART, 5X LOCKABLE DRAWERS	once off	1.00	1.00	912.00	912.00	16,780.74		
SD001-SANITIZER DISPENSER	once off	1.00	1.00	59.78	59.78	1,100.00		
TD001-TOWEL DISPENSER	once off	1.00	1.00	76.09	76.09	1,400.00		
BP001-UMEC 10 PATIENT MONITOR	once off	2.00	1.00	1,404.21	2,808.41			51,674.00
BP002- UMEC 10 PATIENT MONITOR WALL MOUNT	once off	2.00	1.00	304.79	609.58			11,216.30
CR001- CRUTCHES	once off	2.00	1.00	17.50	35.00	644.00		
WC001-WHEEL CHAIR	once off	2.00	1.00	349.41	698.82	12,858.31		

WB002-MEDICAL WASTE BIN	once off	1.00	1.00	76.09	76.09	1,400.00		
FB001-FOWLER BED -EVARIO III ELECTRIC HOSPITAL BED	once off	2.00	1.00	3,633.77	7,267.53			133,722.58
MAT01- COMFORT MATTRESS (LS)	once off	2.00	1.00	452.50	905.00			16,652.00
LAP001-LAPTOP	once off	1.00	1.00	1,130.43	1,130.43	20,800.00		
CHR001- CHAIR	once off	1.00	1.00	163.04	163.04	3,000.00		
CAB001-PLASTIC BEDSIDE CABINETS	once off	2.00	1.00	220.68	441.35	8,120.84		
<b>CSSD ROOM</b>								
AUC001- AUTOCLAVE -STERILIZER ( TABLE TOP, CLASS B, WITH VACUUM DRY FUNCTION) 23L	once off	1.00	1.00	2,695.65	2,695.65			49,600.00
INSTRUMENT TROLLEY	once off	1.00	1.00	182.38	182.38	3,355.71		
<b>PARA WC</b>								
<b>GUARD HOUSE</b>								
Guard House - Refuse Yard - Refuse Bin	once off	5.00	1.00	32.61	163.04	3,000.00		
Guard House - Table	once off	1.00	1.00	135.87	135.87	2,500.00		
Guard House - Chair	once off	1.00	1.00	70.11	70.11	1,290.00		
Guard House - Coat Hanger	once off	1.00	1.00	40.76	40.76	750.00		
Guard House - Dustbin	once off	1.00	1.00	10.87	10.87	200.00		
Guard House - CCTV Monitor screen	once off	1.00	1.00	733.70	733.70	13,500.00		
Guard House - Log book	once off	1.00	1.00	10.87	10.87	200.00		
Guard House - Log book ( incident report )	once off	1.00	1.00	10.87	10.87	200.00		
Guard House - Dustbin	once off	1.00	1.00	10.87	10.87	200.00		
<b>KITCHEN</b>								
Staff Kitchen - Microwave	once off	1.00	1.00	81.52	81.52	1,500.00		
Staff Kitchen - Kettle	once off	1.00	1.00	10.87	10.87	200.00		
Staff Kitchen - Small round table	once off	1.00	1.00	119.57	119.57	2,200.00		
Staff Kitchen - Chairs	once off	2.00	1.00	70.11	140.22	2,580.00		
Staff Kitchen - Plates	once off	10.00	1.00	1.63	16.30	300.00		
Staff Kitchen - Mugs	once off	10.00	1.00	1.09	10.87	200.00		
Staff Kitchen - Utensils	once off	10.00	1.00	1.36	13.59	250.00		
Staff Kitchen - Sanitizer Dispenser	once off	1.00	1.00	59.78	59.78	1,100.00		
Staff Kitchen - Paper towels Dispenser	once off	1.00	1.00	76.09	76.09	1,400.00		
Staff Kitchen - Dustbin	once off	1.00	1.00	10.87	10.87	200.00		
Stoep Area - Outside Seating Table	once off	1.00	1.00	869.57	869.57	16,000.00		
Stoep Area - Rubbish Bin (Concrete External)	once off	1.00	1.00	27.17	27.17	500.00		
Stoep Area- Concrete seating bench	once off	1.00	1.00	434.78	434.78	8,000.00		
Stoep Area - Outdoor Seating Unit	once off	1.00	1.00	434.78	434.78	8,000.00		
Stoep Area - Outdoor drinking Fountain - built in	once off	1.00	1.00			-		



<b>SLUICE ROOM</b>								
Sluice - UV Steriliser 37 x 21 x 24cm	once off	1.00	1.00	142.17	142.17	2,616.00		
Sluice - Sanitizer Dispenser	once off	1.00	1.00	59.78	59.78	1,100.00		
Sluice - Paper towel dispenser	once off	1.00	1.00	76.09	76.09	1,400.00		
Sluice - Soap dispenser	once off	1.00	1.00	59.78	59.78	1,100.00		
Sluice - Cleaning List	once off	1.00	1.00	10.87	10.87	200.00		
Sluice - Mop trolley	once off	1.00	1.00	48.91	48.91	900.00		
Sluice - Dry linen Trolley	once off	1.00	1.00	652.17	652.17	12,000.00		
Sluice - Wet linen	once off	1.00	1.00	652.17	652.17	12,000.00		
Sluice - Mobile linen carrier	once off	1.00	1.00	380.43	380.43	7,000.00		
<b>GAS STORAGE</b>								
Gas Storage - Medical Gas Cylinders	once off	4.00	1.00	97.83	391.30	7,200.00		
Gas Storage - Mobile Emergency Oxygen trolley	once off	1.00	1.00	923.91	923.91	17,000.00		
Gas Storage - Log book ( check in /check out list)	once off	1.00	1.00	10.87	10.87	200.00		
<b>CLEANER ROOM</b>								
Cleaner Room - Tumble dryer	once off	1.00	1.00	715.22	715.22	13,160.00		
Cleaner Room - Washing machine	once off	1.00	1.00	663.04	663.04	12,200.00		
Cleaner Room- Linen Trolley ( Dry Linen)	once off	1.00	1.00	597.83	597.83	11,000.00		
Cleaner Room- Linen Trolley ( Wet Linen)	once off	1.00	1.00	597.83	597.83	11,000.00		
Cleaner Room-Table	once off	1.00	1.00	135.87	135.87	2,500.00		
Cleaner Room - Iron	once off	1.00	1.00	16.30	16.30	300.00		
Cleaner Room - Ironing Board	once off	1.00	1.00	70.65	70.65	1,300.00		
Cleaner Room - Coat hanger	once off	1.00	1.00	40.76	40.76	750.00		
Cleaner Room - Dustbin	once off	1.00	1.00	10.87	10.87	200.00		
Cleaner Room - Sanitizer holder	once off	1.00	1.00	59.78	59.78	1,100.00		
Cleaner Room - Towel Dispenser	once off	1.00	1.00	76.09	76.09	1,400.00		
<b>DOCTERS CONSULTING ROOM</b>								
<i>WB001-CHAIR,ARM REST, UPHOLSTERED, 4 LEGS</i>	once off	1.00	1.00	70.11	70.11	1,290.00		
<i>WB001-WASTE BIN</i>	once off	1.00	1.00	10.87	10.87	200.00		
<i>MT001- MEDICAL TROLLEY</i>	once off	1.00	1.00	152.12	152.12	2,799.00		
<i>SD001- SOUP DISPENSER</i>	once off	1.00	1.00	59.78	59.78	1,100.00		
<i>PTD001-PAPER TOWEL DISPENSER</i>	once off	1.00	1.00	76.09	76.09	1,400.00		
<i>EB001-OBSETRIC BED - MP-7097</i>	once off	1.00	1.00	6,795.58	6,795.58	125,038.75		
<i>BS001-BED STEP</i>	once off	1.00	1.00	55.90	55.90	1,028.57		
<i>LAP001-LAPTOP</i>	once off	1.00	1.00	1,130.43	1,130.43		20,800.00	
<i>CHR001-CHAIR</i>	once off	2.00	1.00	163.04	326.09	6,000.00		
<i>COU001-COUCH</i>	once off	1.00	1.00	220.11	220.11	4,050.00		
<i>LIG002-MOBILE LIGHT</i>	once off	1.00	1.00	230.43	230.43	4,240.00		
<i>PATIENT MONITOR VS900</i>	once off	1.00	1.00	1,992.32	1,992.32	36,658.72		
<i>BASIC STAND ROLLING VS900</i>	once off	1.00	1.00	218.82	218.82	4,026.32		
<i>E SCOPE OTOSCOPE, DIRECT ILLUMINATION</i>	once off	1.00	1.00	351.68	351.68	6,471.00		



<b>NURSES CONSULTING ROOM 2</b>							
WB001-WASTE BIN	once off	1.00	1.00	16.30	16.30	300.00	
MT001- SMALL DRESSING TROLLEY	once off	1.00	1.00	235.49	235.49	4,333.00	
SANITIZER DISPENSER	once off	1.00	1.00	59.78	59.78	1,100.00	
PAPER TOWEL DISPENSER	once off	1.00	1.00	76.09	76.09	1,400.00	
LP001- LAPTOP	once off	1.00	1.00	1,130.43	1,130.43		20,800.00
CHR001- CHAIR	once off	1.00	1.00	163.04	163.04	3,000.00	
CHR003-CHAIR	once off	2.00	1.00	163.04	326.09	6,000.00	
SMALL DRESSING TROLLEY WITH RAILS	once off	1.00	1.00	235.49	235.49	4,333.00	
UMEC 10 PATIENT MONITOR	once off	1.00	1.00	1,404.21	1,404.21	25,837.40	
BASIC ROLLING STAND	once off	1.00	1.00	218.80	218.80	4,026.00	
EXAMINATION BED/COUCH	once off	1.00	1.00	219.78	219.78	4,044.00	
FOOTSTOOL SINGLE	once off	1.00	1.00	55.87	55.87	1,028.00	
FOOTSTOOL DOUBLE STEP	once off	1.00	1.00	230.43	230.43	4,240.00	
EXAMINATION LAMP LED 220V WITH MOBILE STAND	once off	1.00	1.00	297.34	297.34	5,471.00	
WALL DIAGNOSTIC RI-FORMER 2 HANDLES 3.5V/ 230	once off	1.00	1.00	570.16	570.16	10,491.00	
RI-SCOPE L1 OPHTHALMOSCOPE HEAD XL 3.5V ANTITHEFT	once off	1.00	1.00	230.43	230.43	4,240.00	
RI-SCOPE L1 OYOSCOPE HEAD XL 3.5 V ANTITHEFT	once off	1.00	1.00	102.56	102.56	1,887.02	
<b>LINEN ROOM</b>							
<b>NURSES OFFICE</b>							
LP001- LAPTOP	once off	1.00	1.00	1,130.43	1,130.43		20,800.00
CHR001- CHAIR	once off	2.00	1.00	70.11	140.22	2,580.00	
CHR003-CHAIR	once off	1.00	1.00	70.11	70.11	1,290.00	
<b>DISPENSERY</b>							
Dispensary room - Computer	once off	1.00	1.00	1,130.43	1,130.43		20,800.00
Dispensary room - Steel Cabinet	once off	1.00	1.00	1,195.65	1,195.65	22,000.00	
Dispensary room -Stock card	once off	1.00	1.00	10.87	10.87	200.00	
Dispensary room - Dustbin	once off	2.00	1.00	10.87	21.74	400.00	
Dispensary room - Order book	once off	1.00	1.00	10.87	10.87	200.00	
<b>WAITING AREA</b>							
Waiting area - Waiting chairs	once off	7.00	1.00	70.11	490.76	9,030.00	
Waiting area - sanitizer dispenser	once off	1.00	1.00	59.78	59.78	1,100.00	
Waiting area - Television	once off	2.00	1.00	326.09	652.17	12,000.00	

<b>Passage</b>								
Passage - Pin Boards	once off	5.00	1.00	25.00	125.00	2,300.00		
Passage - Speakers	once off	4.00	1.00	81.52	326.09	6,000.00		
<b>RECEPTION</b>								
Reception - Chair	once off	1.00	1.00	163.04	163.04	3,000.00		
Reception - Computer	once off	1.00	1.00	1,130.43	1,130.43		20,800.00	
Reception - Gigaset cordless phone	once off	1.00	1.00	35.33	35.33	650.00		
Reception - Log book	once off	1.00	1.00	10.87	10.87	200.00		
Reception - Printer	once off	1.00	1.00	190.22	190.22	3,500.00		
Reception - Stationary	once off	10.00	1.00	54.35	543.48	10,000.00		
Reception - Sanitizer dispenser	once off	1.00	1.00	59.78	59.78	1,100.00		
Reception - Water dispenser	once off	1.00	1.00	217.39	217.39	4,000.00		
Reception - Waste bin	once off	1.00	1.00	10.87	10.87	200.00		
<b>RECORD ROOM</b>								
<b>SERVER ROOM</b>								
Server Room - Server	once off	1.00	1.00	13,586.96	13,586.96	250,000.00		
<b>POLICE OFFICER ROOM</b>								
<i>Activity - Police Officer consultation ( statement taking for GBV case , guidance , referrals )</i>								
Police Room - Table	once off	1.00	1.00	543.48	543.48	10,000.00		
Police Room - 3 chairs	once off	3.00	1.00	163.04	489.13	9,000.00		
Police Room - Computer	once off	1.00	1.00	1,130.43	1,130.43	15,000.00		
Police Room - Coat hanger	once off	1.00	1.00	40.76	40.76	750.00		
<b>ABLUTION CORE</b>								
<b>PASSAGE</b>								
Passage - Pin Boards	once off	5.00	1.00	25.00	125.00	2,300.00		
Passage - Speakers	once off	10.00	1.00	81.52	815.22	15,000.00		
Passage - Artwork	once off	4.00	1.00	81.52	326.09	6,000.00		
<i>Activity - (access to social workers, psychologists, youth officers, youth pastors)</i>								
<i>Activity - Case management and aftercare</i>								

Activity - Untreated childhood trauma and feelings of being unloved, misunderstood and suicide ideation (help-seeking behaviour)								
Activity - Constructive Conflict Resolution & Mediation								
Activity - Anger Management								
<b>SOCIAL WORKER ROOM 1</b>								
Social Worker - Chair	once off	2.00	1.00	163.04	326.09	6,000.00		
Social Worker - No brand Rubi Chairs (loose chairs)	once off	2.00	1.00	19.02	38.04	700.00		
Social Worker - Small round table	once off	1.00	1.00	119.57	119.57	2,200.00		
Social Worker - sanitizer dispenser	once off	1.00	1.00	59.78	59.78	1,100.00		
Social Worker - Computer	once off	1.00	1.00	1,130.43	1,130.43		20,800.00	
Social Worker - Stationeries	once off	1.00	1.00	54.35	54.35	1,000.00		
Social Worker - Waste bin	once off	1.00	1.00	10.87	10.87	200.00		
Social Worker - indoor plant and planter	once off	1.00	1.00	54.35	54.35	1,000.00		
<b>SOCIAL WORKER ROOM 1</b>								
Social Worker - Chair	once off	2.00	1.00	163.04	326.09	6,000.00		
Social Worker - No brand Rubi Chairs (loose chairs)	once off	2.00	1.00	19.02	38.04	700.00		
Social Worker - Small round table	once off	1.00	1.00	119.57	119.57	2,200.00		
Social Worker - sanitizer dispenser	once off	1.00	1.00	59.78	59.78	1,100.00		
Social Worker - Computer	once off	1.00	1.00	1,130.43	1,130.43		20,800.00	
Social Worker - Stationeries	once off	1.00	1.00	54.35	54.35	1,000.00		
Social Worker - Waste bin	once off	1.00	1.00	10.87	10.87	200.00		
Social Worker - indoor plant and planter	once off	1.00	1.00	54.35	54.35	1,000.00		
<b>PASSAGE</b>								
ART WORK	once off	1.00	1.00	543.48	543.48	10,000.00		
PINBOARDS	once off	5.00	1.00	25.00	125.00	2,300.00		
<b>RECORD ROOM</b>								
<b>OPEN PLAN OFFICE</b>								
Activity - Collaboration with NGOs offering youth focused wellness services								
Open Plan Office - Tables joinery		7.00	1.00					
Open Plan Office - Chairs	once off	7.00	1.00	163.04	1,141.30	21,000.00		
Open Plan Office - Laptops	once off	8.00	1.00	1,130.43	9,043.48		166,400.00	
Open Plan Office - Printer	once off	1.00	1.00	190.22	190.22	3,500.00		
Open Plan Office - Sanitizer dispenser	once off	1.00	1.00	59.78	59.78	1,100.00		
Open Plan Office - Rubbish Bin	once off	1.00	1.00	27.17	27.17	500.00		
Open Plan Office - Forms and Logbooks	once off	1.00	1.00	10.87	10.87	200.00		

Open Plan Office - Water Dispenser	once off	1.00	1.00	217.39	217.39	4,000.00		
<b>OUTDOOR CO-WORKING SPACE</b>								
Co-Working Space - Outdoor table	once off	1.00	1.00	869.57	869.57	16,000.00		
Co-Working Space - Chairs	once off	8.00	1.00	163.04	1,304.35	24,000.00		
Co- Working Space - Indoor plant and Planter	once off	1.00	1.00	54.35	54.35	1,000.00		
<b>WAITING AREA</b>								
<b>Couch</b>								
<b>GROUP THERAPY ROOM</b>								
<i>Activity - Individual, group therapy and family mediation</i>								
<i>Activity - Collaboration with NGOs offering youth focused wellness services</i>								
<i>Activity - Story Exchange Sessions</i>								
Group therapy - Meeting Table	once off	1.00	1.00	1,059.78	1,059.78	19,500.00		
Group therapy - Meeting Table chairs	once off	8.00	1.00	163.04	1,304.35	24,000.00		
Group therapy/Stoep area - Meeting Table	once off	1.00	1.00	1,059.78	1,059.78	19,500.00		
Group therapy/Stoep area - chairs	once off	8.00	1.00	70.11	560.87	10,320.00		
Television- Wall mounted	once off	8.00	1.00	434.78	3,478.26	64,000.00		
Presentation system	once off	1.00	1.00	543.48	543.48	10,000.00		
Speakers	once off	1.00	1.00	760.87	760.87	14,000.00		
<b>KITCHEN</b>								
Kitchen 2 - Microwave	once off	1.00	1.00	81.52	81.52	1,500.00		
Kitchen 2- Kettle	once off	1.00	1.00	10.87	10.87	200.00		
Kitchen 2- Small round table	once off	1.00	1.00	135.87	135.87	2,500.00		
Kitchen 2- Chairs	once off	4.00	1.00	70.11	280.43	5,160.00		
Kitchen 2- Plates	once off	30.00	1.00	1.63	48.91	900.00		
Kitchen 2- Mugs	once off	30.00	1.00	1.09	32.61	600.00		
Kitchen 2- Utensils (Spoon, forks, knives, serving spoons)	once off	90.00	1.00	0.54	48.91	900.00		
Kitchen 2- Sanitizer Dispenser	once off	1.00	1.00	59.78	59.78	1,100.00		
Kitchen 2- Paper towels Dispenser	once off	1.00	1.00	76.09	76.09	1,400.00		
Kitchen 2- Dustbin	once off	1.00	1.00	10.87	10.87	200.00		
Kitchen 2- Fridge	once off	1.00	1.00	298.91	298.91	5,500.00		
<b>PUBLIC WC</b>								

EXTERNAL DOCTER'S PRACTICE							
CONSULTING ROOM							
External Dr. Consultation Room - Chairs	once off	1.00	1.00	70.11	70.11	To be supplied by tenant	
External Dr. Consultation Room - Examination Bed	once off	3.00	1.00	141.30	423.91	To be supplied by tenant	
External Dr. Consultation Room - Bed step	once off	1.00	1.00	59.78	59.78	To be supplied by tenant	
RECEPTION							
External Dr. Reception - Chair	once off	1.00	1.00	70.11	70.11	To be supplied by tenant	
External Dr. Reception - Computer	once off	1.00	1.00	1,130.43	1,130.43	To be supplied by tenant	
External Dr. Reception - Log book	once off	1.00	1.00	10.87	10.87	To be supplied by tenant	
External Dr. Reception - Printer	once off	1.00	1.00	190.22	190.22	To be supplied by tenant	
External Dr. Reception - Stationary	once off	1.00	1.00	54.35	54.35	To be supplied by tenant	
External Dr. Reception - Water Dispenser	once off	1.00	1.00	190.22	190.22	To be supplied by tenant	
External Dr. Waiting area - Television	once off	1.00	1.00	217.39	217.39	To be supplied by tenant	
WAITING AREA							
PARA WC							
KITCHEN							
Kitchen 3 - Microwave	once off	1.00	1.00	81.52	81.52	To be supplied by tenant	
Kitchen 3- Kettle	once off	1.00	1.00	10.87	10.87	To be supplied by tenant	
Kitchen 3- Small round table	once off	1.00	1.00	135.87	135.87	To be supplied by tenant	
Kitchen 3- Chairs	once off	4.00	1.00	70.11	280.43	To be supplied by tenant	
Kitchen 3- Plates	once off	30.00	1.00	1.63	48.91	To be supplied by tenant	

Kitchen 3- Mugs	once off	30.00	1.00	1.09	32.61	To be supplied by tenant		
Kitchen 3- Utensils (Spoon, forks, knives, serving spoons)	once off	90.00	1.00	0.54	48.91	To be supplied by tenant		
Kitchen 3- Dustbin	once off	1.00	1.00	10.87	10.87	To be supplied by tenant		
Kitchen 3- Fridge	once off	1.00	1.00	298.91	298.91	To be supplied by tenant		
#BreakFree Youth Clinic - Storage Container	once off	1.00	1.00	1,358.70	1,358.70	25,000.00		

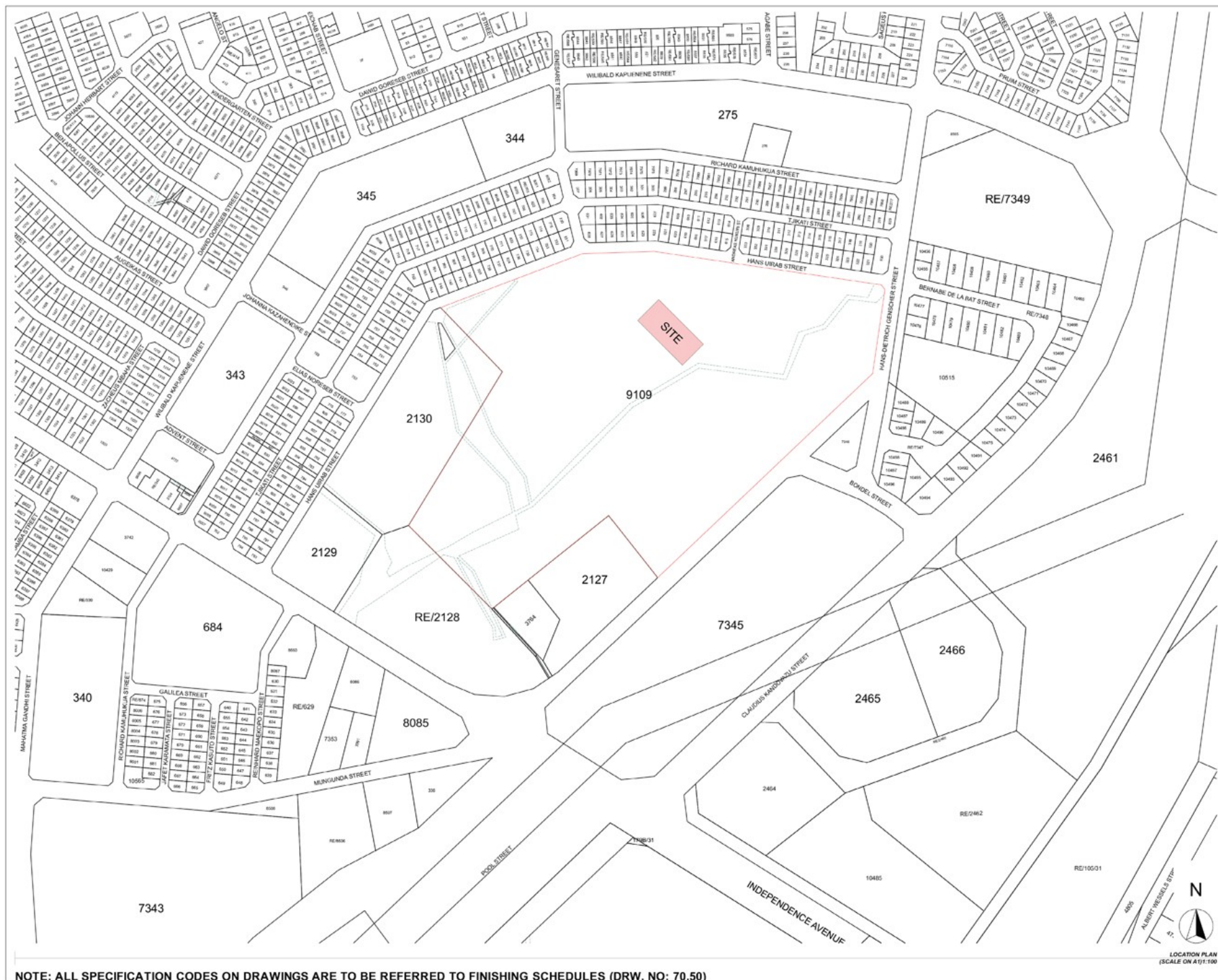




# TECHNICAL DRAWINGS

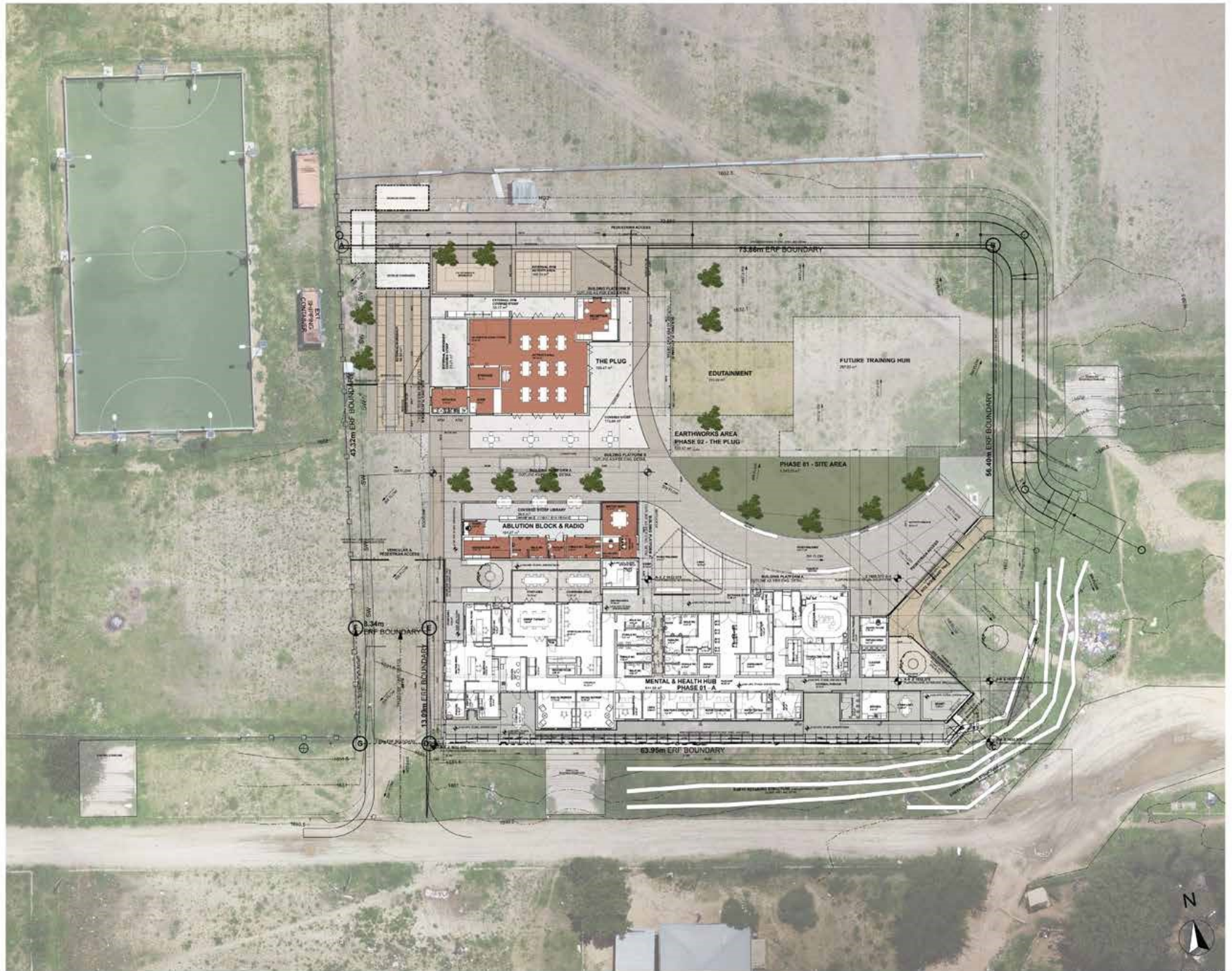
ANNEXURE A

# LOCATION PLAN



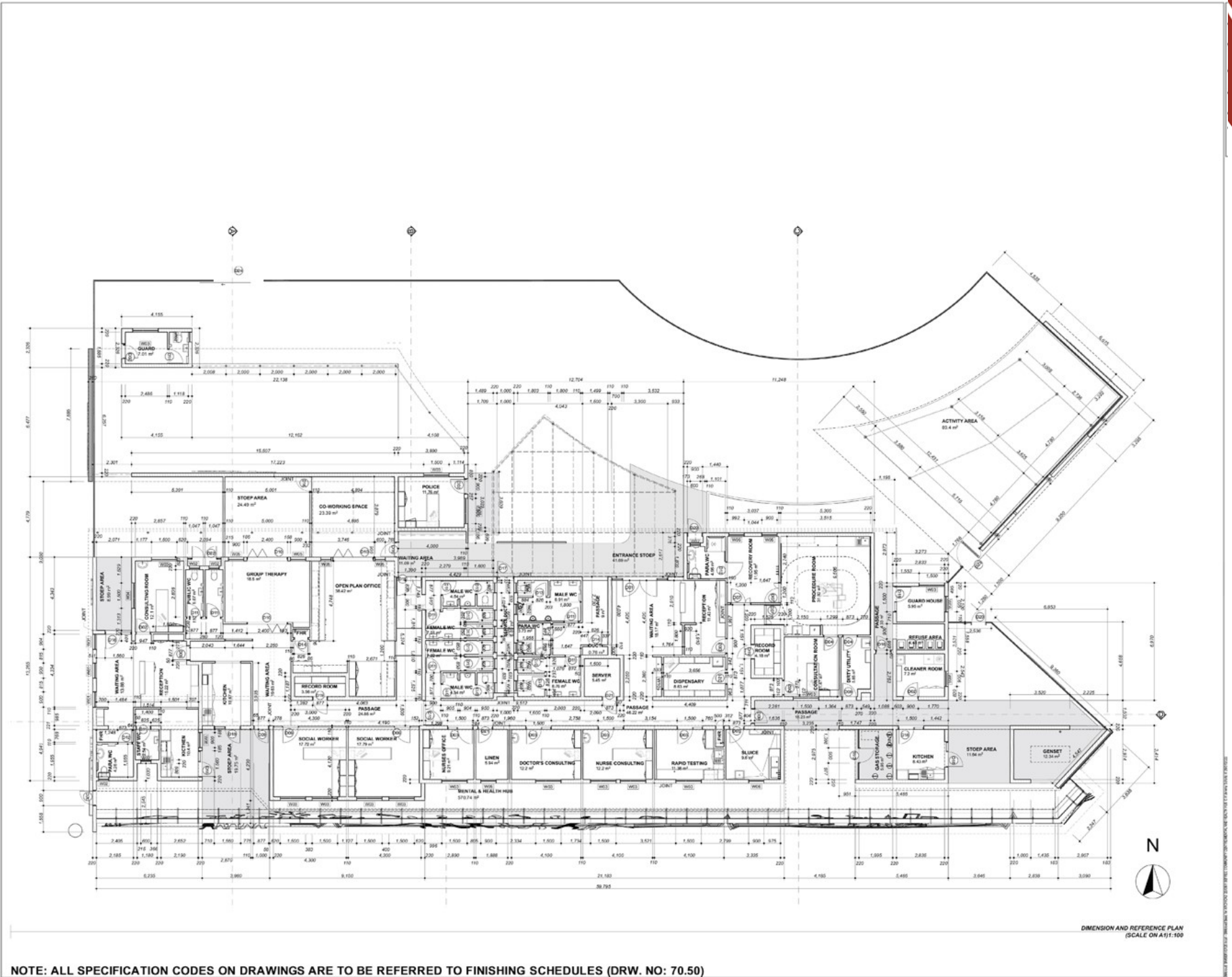
NOTE: ALL SPECIFICATION CODES ON DRAWINGS ARE TO BE REFERRED TO FINISHING SCHEDULES (DRW. NO: 70.50)

# SITE PLAN



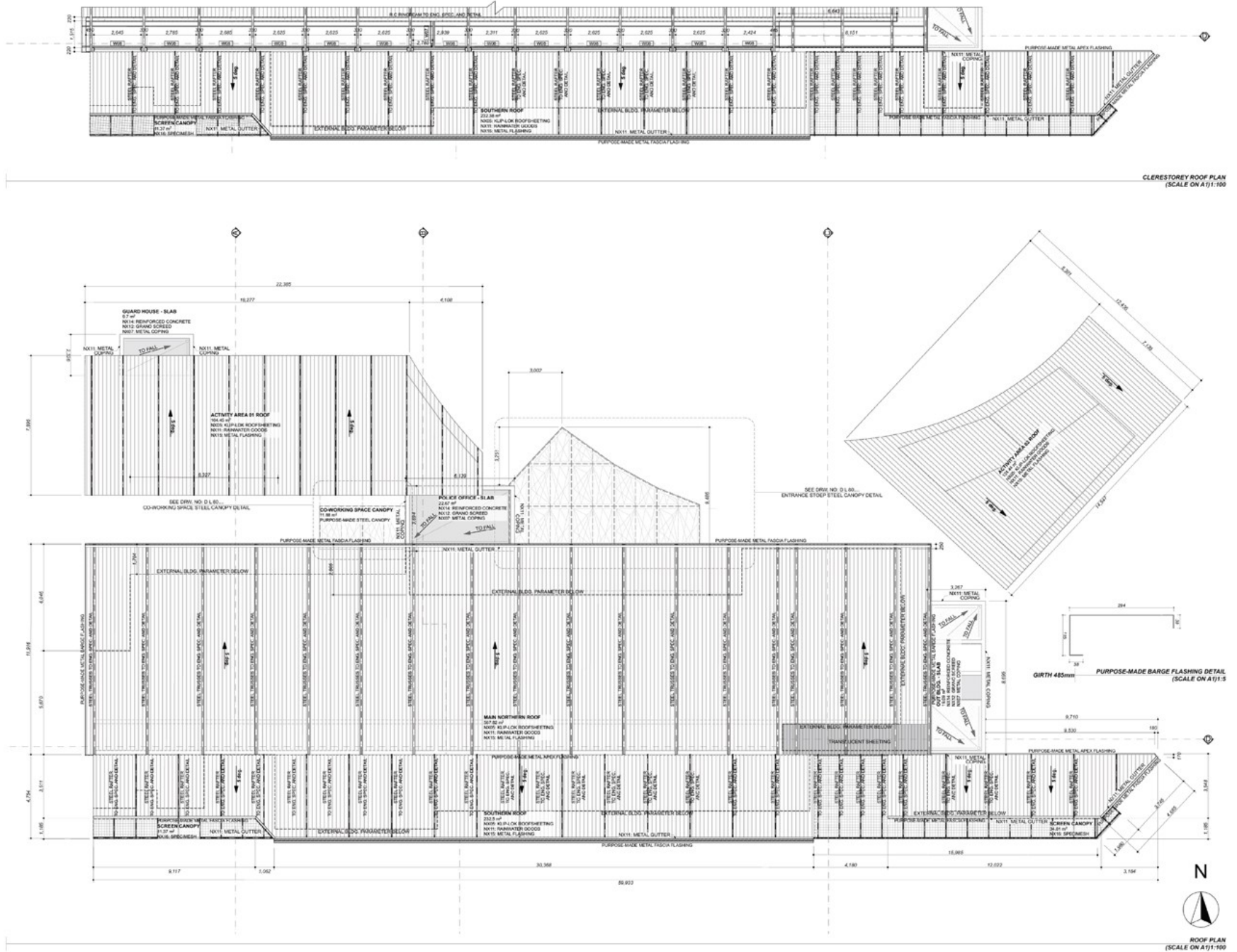
SITE PLAN  
(SCALE ON A1) 1:200

# DIMENSION AND REFERENCE PLAN



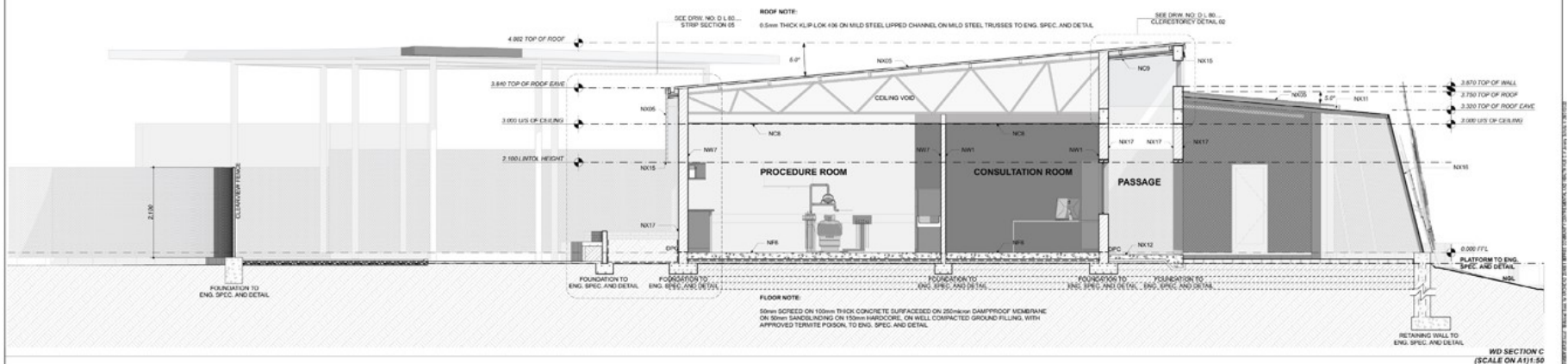
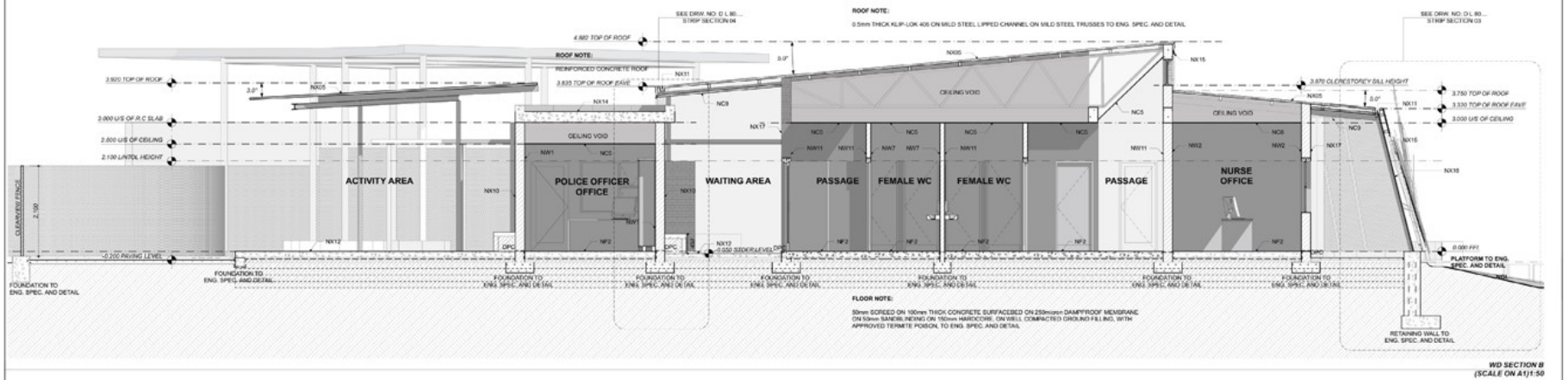
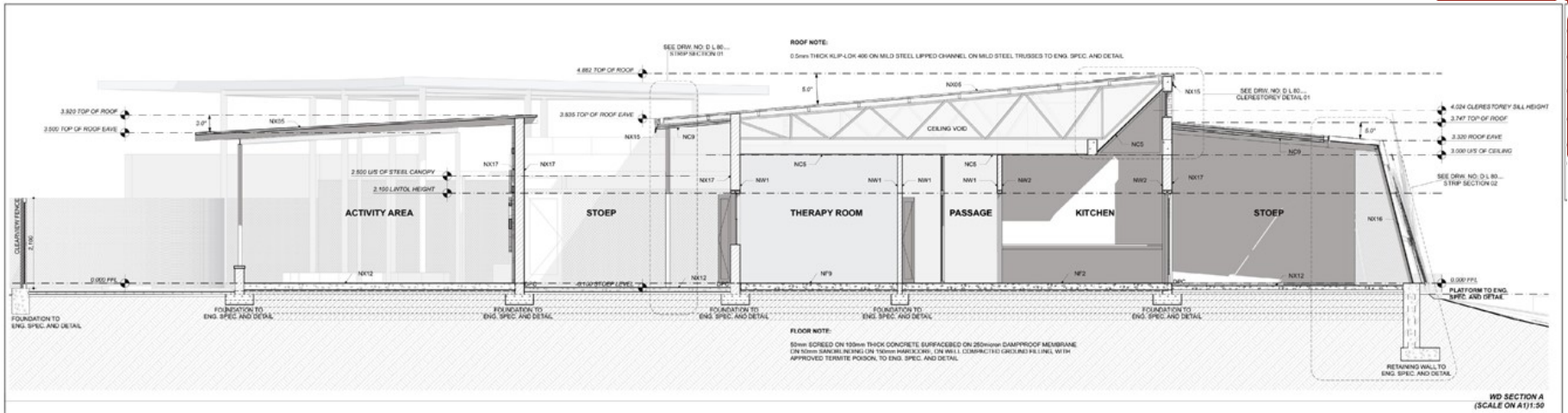
NOTE: ALL SPECIFICATION CODES ON DRAWINGS ARE TO BE REFERRED TO FINISHING SCHEDULES (DRW. NO: 70.50)

# ROOF PLAN



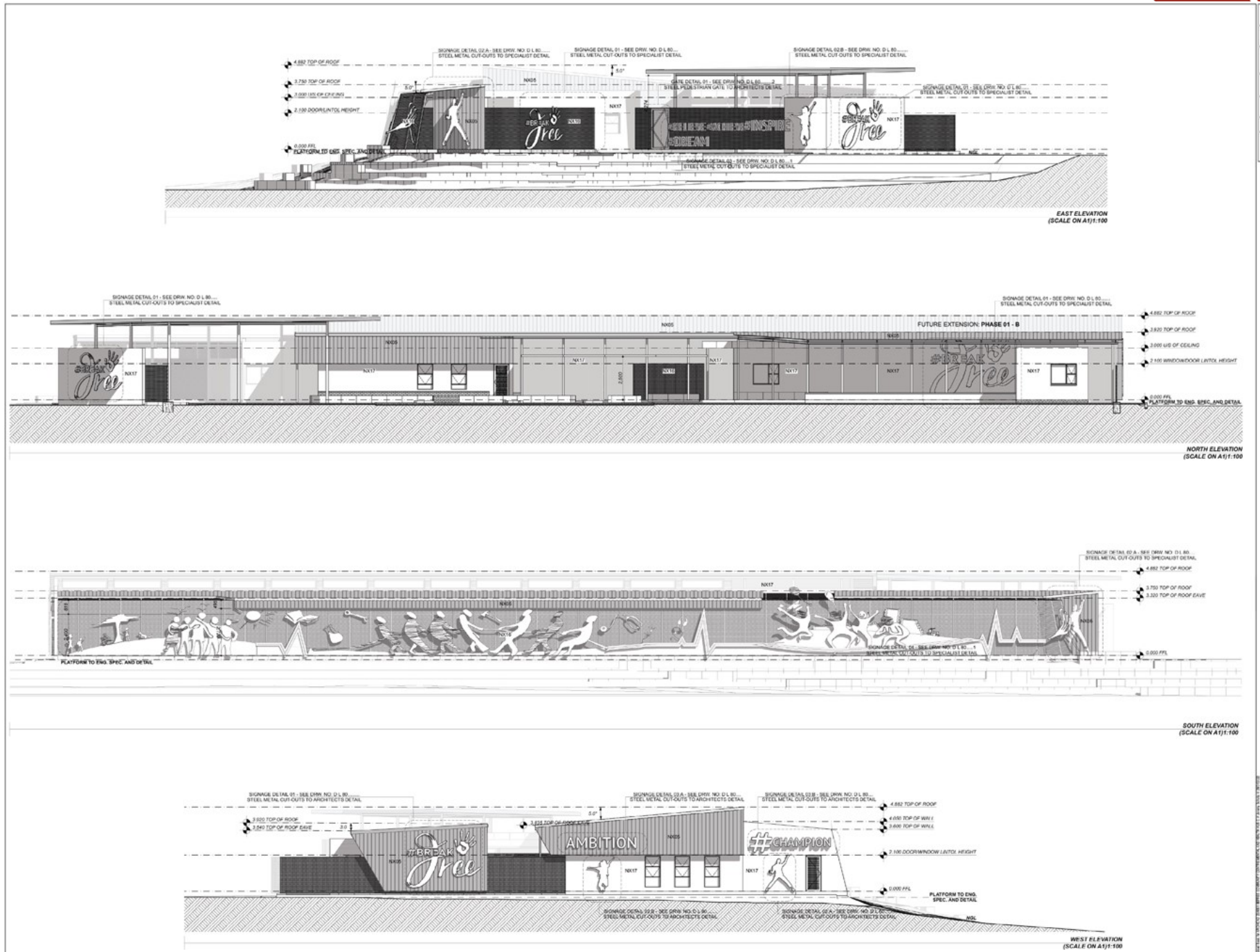
NOTE: ALL SPECIFICATION CODES ON DRAWINGS ARE TO BE REFERRED TO FINISHING SCHEDULES (DRW. NO: 70.50)

# SECTION

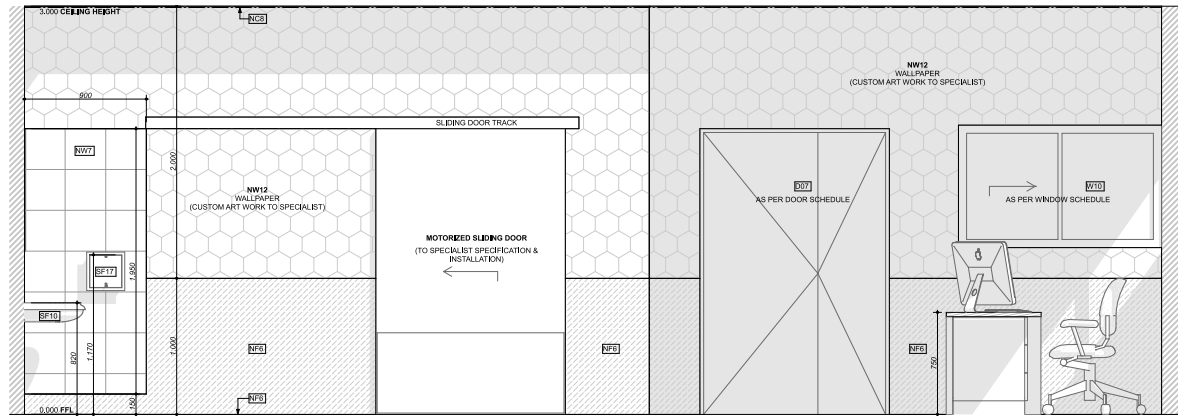


**NOTE: ALL SPECIFICATION CODES ON DRAWINGS ARE TO BE REFERRED TO FINISHING SCHEDULES (DRW. NO: 70.50)**

# ELEVATIONS

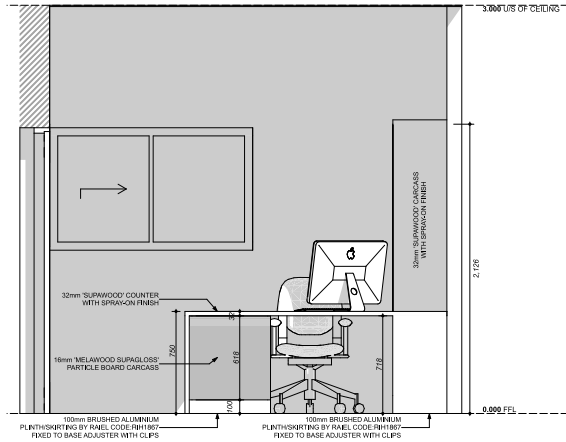


NOTE: ALL SPECIFICATION CODES ON DRAWINGS ARE TO BE REFERRED TO FINISHING SCHEDULES (DRW. NO: 70.50)



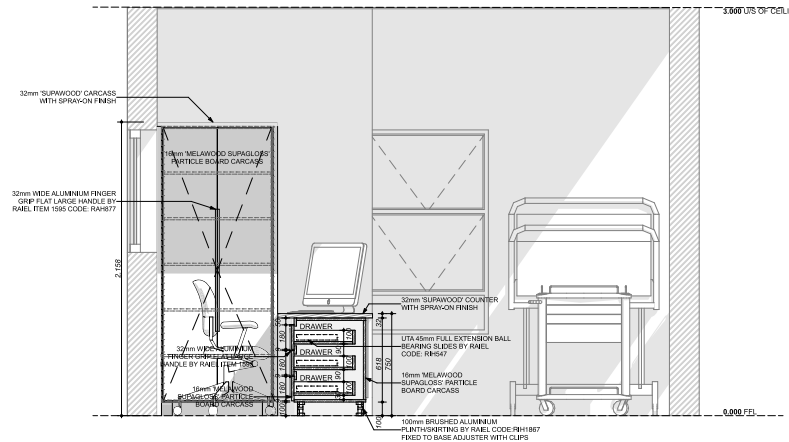
RECOVERY ROOM ELEVATION  
(SCALE ON A1)1:20

03



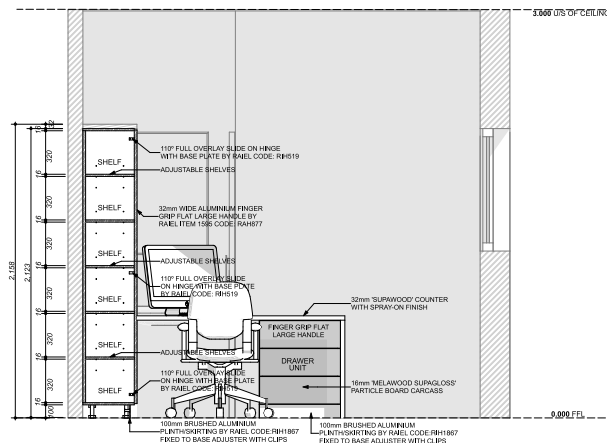
RECOVERY ROOM JOINERY LAYOUT  
(SCALE ON A1)1:20

05



RECOVERY ROOM JOINERY LAYOUT  
(SCALE ON A1)1:20

06



RECOVERY ROOM JOINERY LAYOUT  
(SCALE ON A1)1:20

07

NOTES:

- All materials and methods are to comply with the NATIONAL BUILDING REGULATIONS (Act No. 103 of 1977), and amendments.
- All construction methods and specifications are to be in accordance with THE MODEL PREAMBLES FOR TRADES' (1999 ASA-02) and supplementary preambles unless otherwise specified.
- All materials are to be fixed and finished in accordance with the specifications of the manufacturer of such materials, unless otherwise specified.
- All dimensions are to be checked on site before any work is put in hand. Any lack of clarity or discrepancy is to be brought to the attention of the architect for rectification or clarification.
- This drawing to be read in conjunction with engineer's drawings where applicable.
- Dimensions are not to be scaled from the drawing.

COPYRIGHT RESERVED.

NO.	DATE	DESCRIPTION

CLIENT

TEL: 081 278008  
ADDRESS: ECONOMICORG  
PO Box 463 Windhoek

ARCHITECT

No. 1 Haddy Street, Windhoek  
P.O. Box 88342, Windhoek  
Tel +264 (61) 240 964  
Fax +264 (61) 227 284  
Email: uno@usarch.nam

QUANTITY SURVEYOR:

3 Fald Street, Meunus Wolt P.O. Box Windhoek, Namibia  
Tel +264 61 328 150, Fax 088 655 2225, info@all.com.na

CIVIL ENGINEERS:

Switchboard +264 61 378000  
Website: www.burmeister.com.na  
Address: 126 Antonius Toiva vs Toiva Ave, Suburban, Windhoek

STRUCTURAL ENGINEERS:

Switchboard +264 61 378000  
Website: www.burmeister.com.na  
Address: 126 Antonius Toiva vs Toiva Ave, Suburban, Windhoek

MECHANICAL/ELECTRICAL ENGINEERS:

FRI-4348/ENR 154 Club-244 #1 209 5333  
P.O. Box 3336, Massey Street, Windhoek

PROJECT TITLE:  
**#BEFREE YOUTH CENTRE PHASE 01**

DRAWING TITLE:  
**RECOVERY ROOM LAYOUT & NURSES JOINERY LAYOUT**

WORK TYPE:  
**TECHNICAL DOCUMENTATION**

PURPOSE OF DRAWING:  
E

FOR CONSTRUCTION

SCALE:  
AS SHOWN

PROJ. NO.:  
0091

DWG. NO.:  
D L 50.23

REV. NO.:

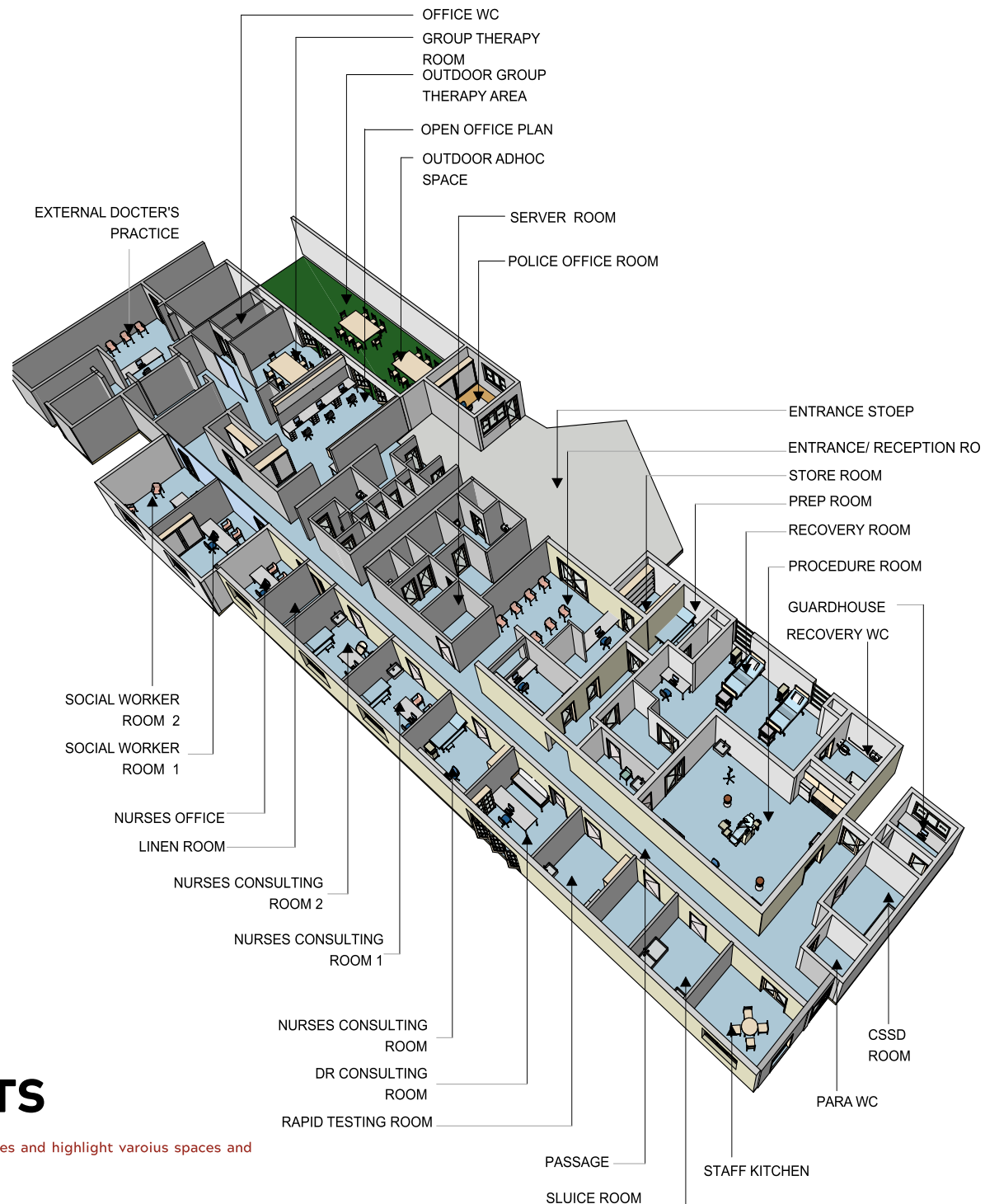
REV. DATE:





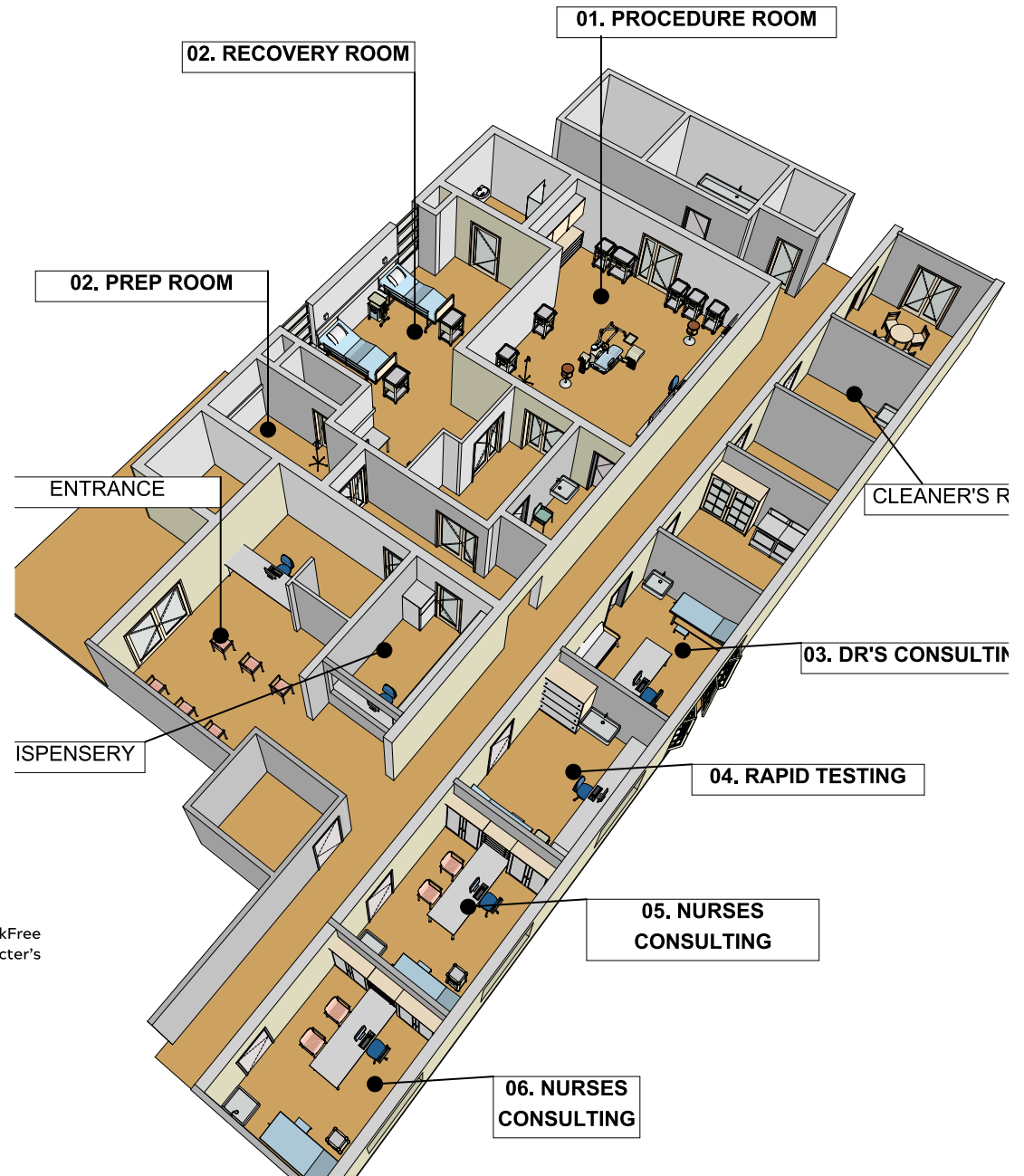
**DETAILED LAYOUTS**

# 3D VIEW OF #BREAKFREE YOUTH CLINIC



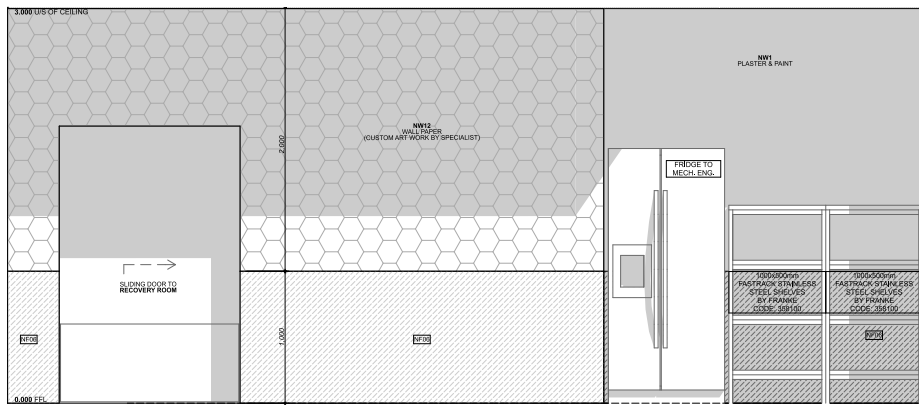
# #9 DETAILED LAYOUTS

Detailed Layouts provide intricate view in the various spaces and highlight various spaces and equipment needs of the #BreakFree Youth Clinic

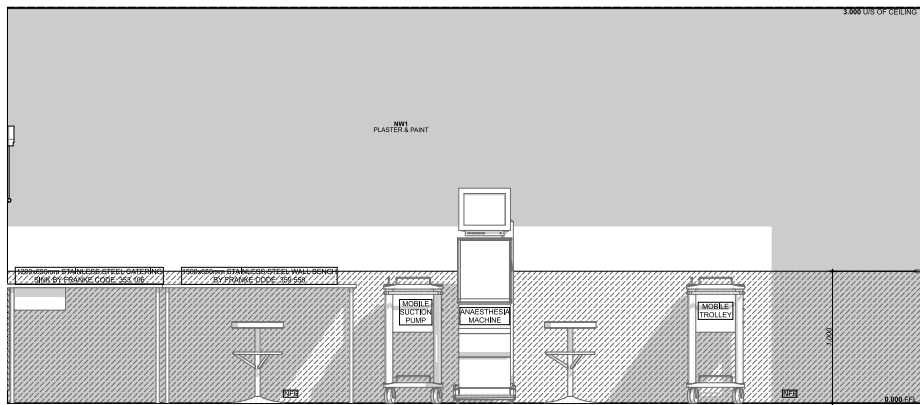


## DETAILED LAYOUTS

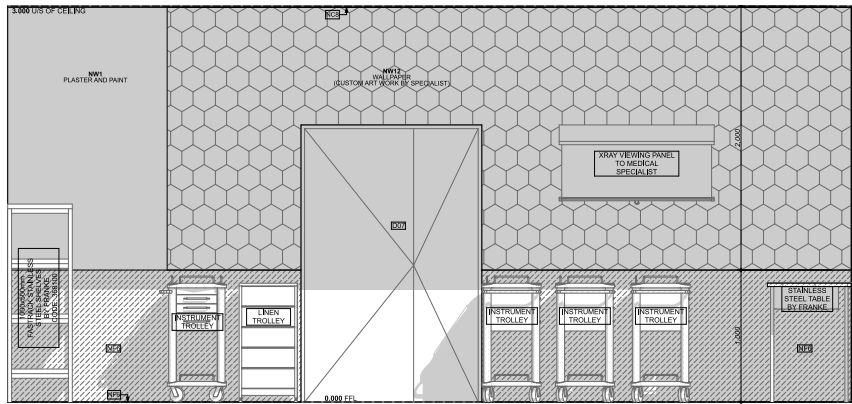
The detailed internal layouts offer a preview of the layout of essential spaces in the #BreakFree Youth Clinic, namely the Procedure Room, Recovery Room, Nurses' Counseling Rooms, and Doctor's Counseling Rooms.



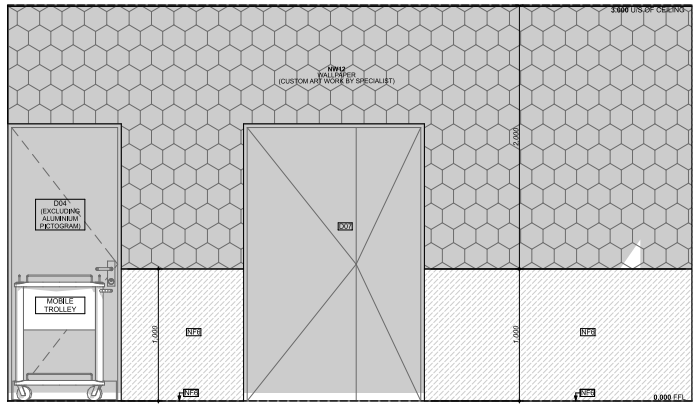
POST-PARTUM ROOM ELEVATION 01  
(SCALE ON A1)1:20



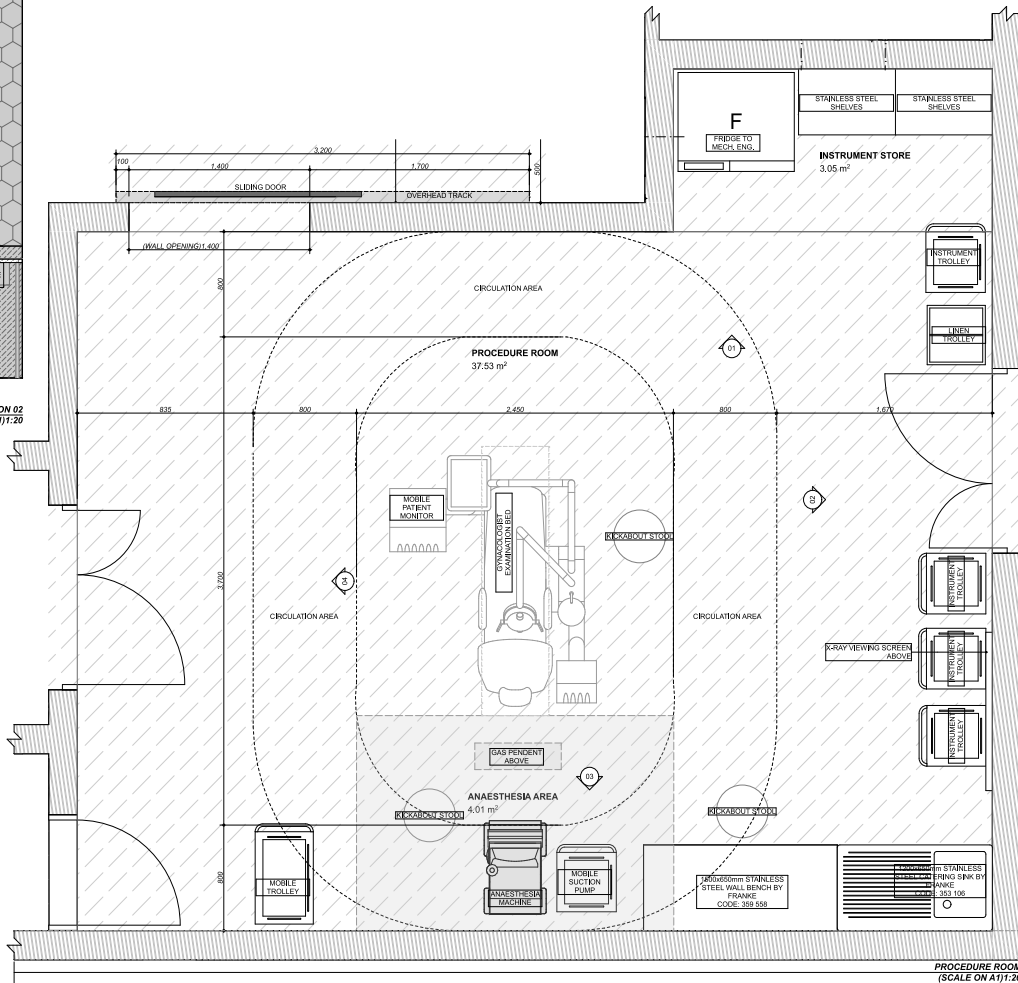
PROCEDURE ROOM ELEVATION 03  
(SCALE ON A1)1:20



PROCEDURE ROOM ELEVATION 02  
(SCALE ON A1)1:20



PROCEDURE ROOM ELEVATION 04  
(SCALE ON A1)1:20



PROCEDURE ROOM  
(SCALE ON A1)1:20

**NOTES:**

- All materials and methods are to comply with the NATIONAL BUILDING REGULATIONS (Act No. 93 of 1977), and amendments.
- All construction methods and specifications are to be in accordance with THE MODEL PREAMBLES FOR TRADES (1999 ASAGS) and supplementary preambles unless otherwise specified.
- All materials are to be fixed and finished in accordance with the specifications of the manufacturer of such materials, unless otherwise specified.
- All dimensions are to be checked on site before any work is put in hand. Any lack of clarity or discrepancy is to be brought to the attention of the architect for rectification or clarification.
- This drawing is to be read in conjunction with engineer's drawings where applicable.
- Dimensions are not to be scaled from the drawing.

COPYRIGHT RESERVED.

REVISIONS:

NO.	DATE	DESCRIPTION
A	09/10/22	REVISED ROOM LAYOUT
B	24/11/22	REVISED ROOM LAYOUT
C	13/12/22	REVISED WALL SPECIFICATIONS

CLIENT

TEL: 001 270806  
P.O. Box 88342, Windhoek  
FAX: +264 (0)1 249 904  
P.O. Box 463 Windhoek

ARCHITECT

No. 1 Huddy Street, Windhoek  
P.O. Box 88342, Windhoek  
Tel: +264 (0)1 249 904  
Fax: +264 (0)1 227 264  
Email: ums@umsarch.com

QUANTITY SURVEYOR:

1 Judd Street, Mosebe Hill, P.O. Box Windhoek, Namibia  
Tel: +264 (0)1 305 106, Fax: 085 655 2325, info@ajc.com

MECHANICAL ENGINEERS

Switchboard: +264 61 379000  
Website: www.burmesec.com.na  
Address: 126 Anthonie Tshilo by Tuus Ave, Suburb, Windhoek

STRUCTURAL ENGINEERS

Switchboard: +264 61 379000  
Website: www.burmesec.com.na  
Address: 126 Anthonie Tshilo by Tuus Ave, Suburb, Windhoek

MECHANICAL/ELECTRICAL ENGINEERS

Fri Consulting Engineers cc  
Tel: +264 (0)1 249 904  
P.O. Box 55 89, Kunene Centre  
41 Oshana Street, Windhoek

PROJECT TITLE: #BEFREE YOUTH CENTRE PHASE 01

DRAWING TITLE: PROCEDURE ROOM LAYOUT

WORK STAGE: TECHNICAL DOCUMENTATION

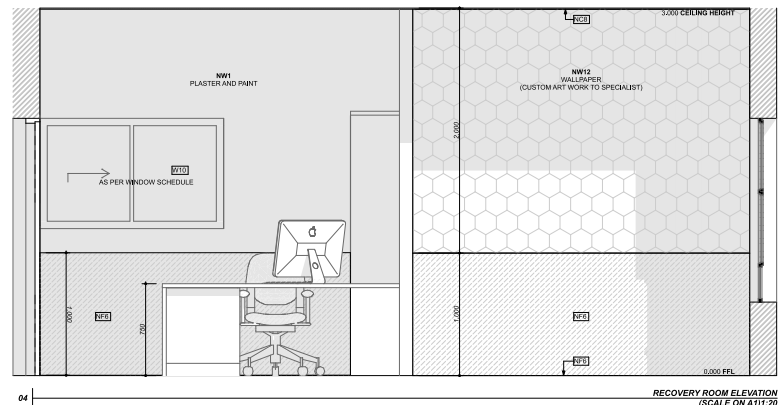
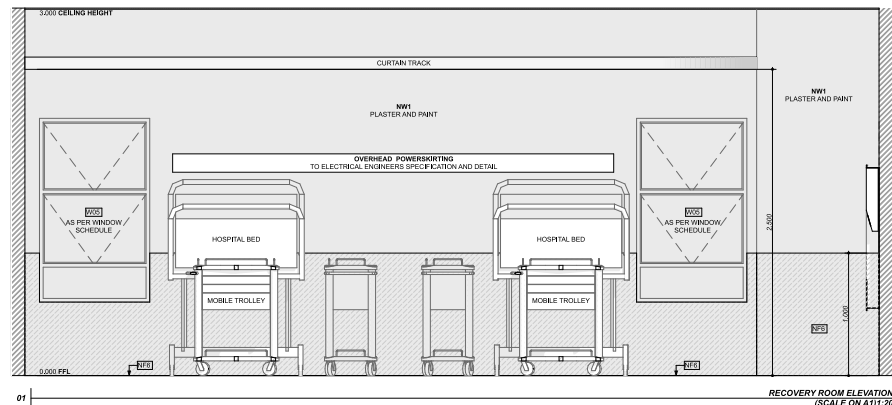
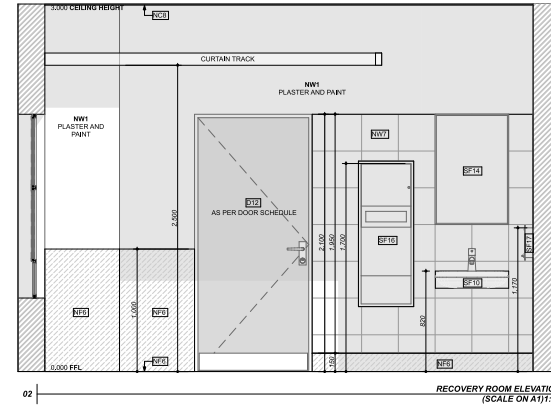
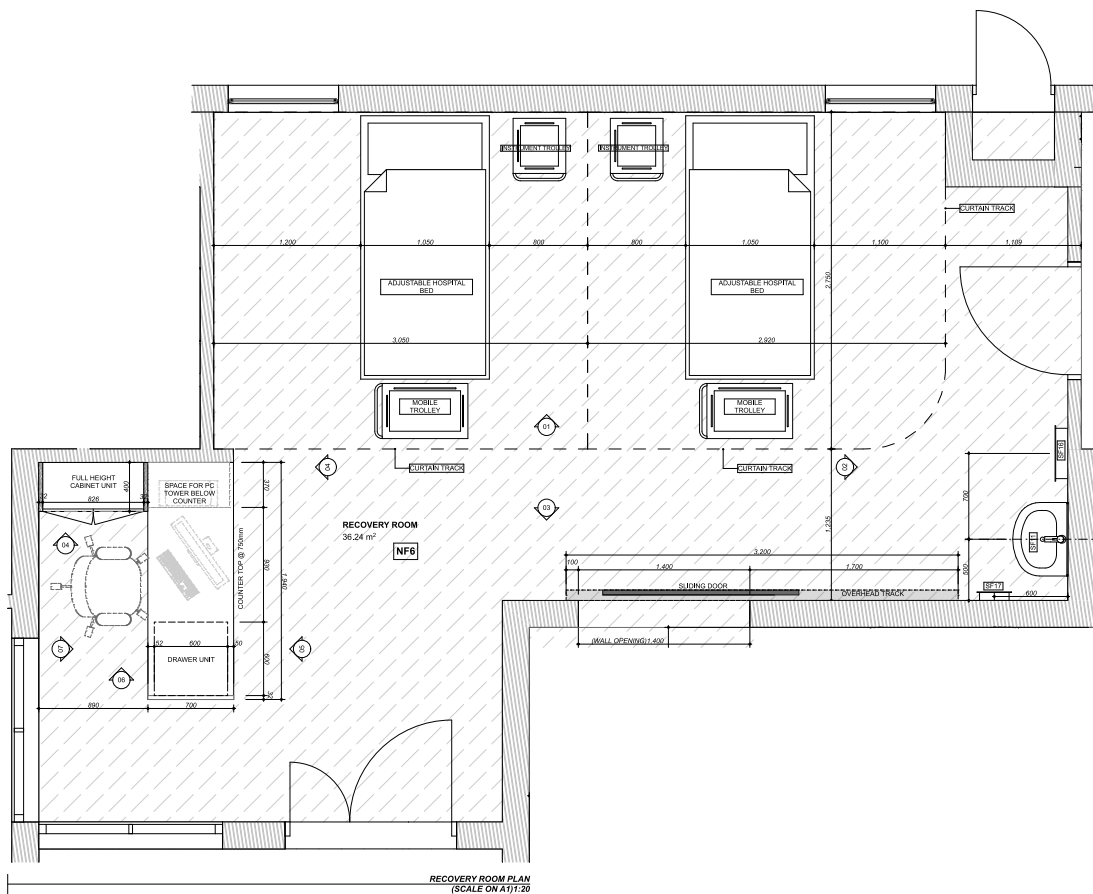
PURPOSE OF DRAWING: FOR CONSTRUCTION

SCALE	REV. NO.	DATE
AS SHOWN	0000	13/12/2022

SCALE	REV. NO.	DATE
D L 50,07	0091	13/12/2022

DRAWN BY: Jeremy Scholtz

CHECKED BY: UNA



**NOTES:**

- Materials and methods are to comply with the NATIONAL BUILDING REGULATIONS (Act No. 103 of 1977), and amendments.
- Construction methods and specifications are to be in accordance with "THE MODEL PREAMBLES FOR TRADES" (1999 ASAGS) and supplementary preambles unless otherwise specified.
- Materials are to be fixed and finished in accordance with the specifications of the manufacturer of such materials, unless otherwise specified.
- All dimensions are to be checked on site before any work is put in hand. Any discrepancy is to be brought to the attention of the architect for rectification or clarification.
- This drawing is to be read in conjunction with engineer's drawings where applicable.
- Dimensions are not to be scaled from the drawing.

COPYRIGHT RESERVED.

REVISIONS

NO.	DATE	DESCRIPTION

CLIENT

# #BeFree

TEL: 061 270806  
1245 9th Floor, Windhoek, Namibia  
PO Box 463 Windhoek

ARCHITECT

No. 1 Raddy Street, Windhoek  
P.O. Box 88342, Windhoek  
Tel: +264 (61) 243 984  
Fax: +264 (61) 227 284  
Email: lsa@stuehmann.com

QUANTITY SURVEYOR

AI AS PROJECT COST CONSULTANTS  
MEMBER ASSOCIATION OF QUANTITY SURVEYORS

3744 Street, Moosburg Mall P O Box Windhoek, Namibia  
Tel: +264 (61) 308 105, Fax: 081 655 2323, info@iq.com.na

ENGINEERS

Sackville Road + 264 61 371000  
Website: www.burnmeister.com.na  
Address: 125 Akerly Drive, Stone Way, Suburb 2, Windhoek

**BURNMEISTER & PARTNERS (PVT) LTD**  
MECHANICAL ELECTRICAL ENGINEERS

STRUCTURAL ENGINEERS

Sackville Road + 264 61 371000  
Website: www.burnmeister.com.na  
Address: 125 Akerly Drive, Stone Way, Suburb 2, Windhoek

**BURNMEISTER & PARTNERS (PVT) LTD**  
STRUCTURAL ENGINEERS

Mechanical, Electrical, Engineering

Fri Consulting Engineers cc  
Full: +264(0)61 244 034, Cell: +264 (61) 298 2333  
P o box 51181, Kandy Circle, 47 Church Square, Windhoek

PROJECT TITLE  
**#BEFREE YOUTH CENTRE**

PHASE 01

DRAWING TITLE  
**RECOVERY ROOM LAYOUT**

WORKSHEET  
TECHNICAL DOCUMENTATION

PURPOSE OF DRAWING  
FOR CONSTRUCTION

SCALE AS SHOWN	PROJECT NO. 0091	DWG NO. D.L 50.22	REV.
DRAWN Jeremy Scholtz	DATE 13/12/2022	CHECKED UNA	

NOTE: ALL SPECIFICATION CODES ON DRAWINGS ARE TO BE REFERRED TO FINISHING SCHEDULES (DRW. NO: 70.50)



## **BRIEF SUMMARY OF CONSTRUCTION**

# A BRIEF SUMMARY OF CONSTRUCTION

Construction on the #BreakFree Youth Clinic started on 31 January 2022, with Site handover ceremony .The first phase of the project will comprise of :

## Phase 1

### #BreakFree Youth Clinic

The proposed #BreakFree Youth Clinic will provide unique health services which cater not only for the physical needs of the youth but their psychological needs as well. This initial phase of the #BeFree project seeks to break the stigma and deal directly to address adolescent health, Gender-based Violence and promote mental health education.

### The Plug (Innovation Hub )

Phase 1 will also see the inclusion of an innovation hub and after school learning support space named the Plug into the current phase of construction. The Plug will provide an online and physical library, Wi-Fi- access, tutoring, homework support and after school mentorship and life skills classroom and outdoor gym.

Practical completion for the Phase 1 is scheduled for July 2023

## Phase 2

### The STEM/Innovation Hall

The training facility will seek to address capacity needs and fill knowledge and skills gaps with a particular focus on front line service providers, youth, parents, and corporates.

The training facilities seeks to strengthen capacity, build evidence and act as a resource hub for SGBV service providers. Part of the training is positioned for the sustainability efforts of Project #BeFree and therefore will be against a fee.

Construction on the project commenced on 31 January 2022, with the contractor establishing and cordoning off the site, after which site preparation and earthworks followed. The images below illustrate the progression in construction :



Fig 6. Site handover co-ordination meeting with #BeFree consultants



Fig 7. Construction progress- subcontractor working on first fixes for electric works



Fig 7.1 Construction progress- erection of building superstructure



Fig 8. Construction progress- erection of superstructure to ring beam height



Fig 9. Construction progress- erection of form work of concrete roof slab



Fig 10. Construction progress- view of internal passage



## ANNEXURE B BRIEF SUMMARY OF COMMUNITY ENGAGEMENT



# #9

## COMMUNITY ENGAGEMENT

Community engagement is a key aspect in the development of the #BreakFree Youth Clinic. As a building that was developed and inspired by the community, it is essential that community participation and involvement are prioritised. Community members will be able to take part in the construction process.

The community engagement opportunities have been designed on a 4-tier roll-out structure to allow for participation at various levels and at different stages of the project. The first integral step was to engage with the community to provide them an update on the progress of the project and the various opportunities.

On 17 March 2022 One Economy Foundation hosted an in-person community update session, updating the community on the progressive #BeFree Centre of Excellence and employment opportunities available during the construction of the project. The meeting acted as a platform for engagement and public inquiry.

The public was informed of the various community engagement opportunities and the 4 tier structure around community engagement namely:

4 Phases ( Tiers of Engagement)	
1. During Construction	1. Skilled and unskilled labour employment for community
2. During Construction	1. Scheduled site visits with local school children; 2. Participation in Landscaping and Planting of trees; 3. Semi-refurbishment of Football Field (#BeFree Spaces)
3. After Completion of Building	1. Employment opportunities for members of the surrounding community; 2. Mentorship opportunities; 3. Voluntary work during events and activations.
4. After Completion of Building	1. Capacity building and skills share through workshops and various training programs on offer.



Fig 11. Community Engagement- view of community gathering held on 17 March 2022



Fig 12. Community Engagement- view of community gathering held on 17 March 2022

# #10

## COMMUNITY ENGAGEMENT: SITE VISIT FROM LOCAL SCHOOLS

It is critical to host students from local schools as part of the One Economy Foundation's community engagement strategy. These sessions are critical in providing learners with a unique opportunity to be part of the construction of the #BreakFree Youth Clinic.

This session also allows learners to learn more about the various services that will be provided as well as the various job opportunities that exist in the construction industry.

School site visits have been planned for different stages of construction. The learners' contributions will forever be embedded in the fabric of the building and project. Community participation helps create a safe and inspiring platform for young people.

### SITE VISIT- JAN JONKER AFRIKAANER SS



Fig 13. Community Engagement- Jan Jonker Afrikaaner SS, students participating in on site construction



Fig 13. Community Engagement- Dawid 'Bonnie' Gawaseb providing community with update and brief history



Fig 14. Community Engagement- Crowd asking questions



Fig 15. Community Engagement- Jan Jonker Afrikaaner SS, students participating in on site construction



Fig 16. Community Engagement- Jan Jonker Afrikaaner SS, students participating in on site construction







Fig 19. Community Engagement- St Barnabas, students participating in bricklaying




Fig 20. Community Engagement- St Barnabas, students participating in bricklaying and cement mixing


# #BeFree


-  BeFreeYouth
-  befreenamibia
-  BeFree Youth
-  Project BeFree

**#PoweredByYouth**



+264 61 2707 806 

PO Box 463, Windhoek, Namibia 

admin@1economy.org   
projectbefree@1economy.org